



ELECTRONIC COPY

LG810639558 Report verification at igi.org



June 18, 2026 IGI Report Number LG810639558 Description LABORATORY GROWN DIAMOND Shape and Cutting Style ROUND BRILLIANT Measurements 6.39 - 6.42 X 3.92 MM GRADING RESULTS Carat Weight 1.00 CARAT Color Grade FANCY VIVID GREEN Clarity Grade VS 2 Cut Grade IDEAL

June 18, 2026 IGI Report Number LG810639558 Description LABORATORY GROWN DIAMOND Shape and Cutting Style ROUND BRILLIANT Measurements 6.39 - 6.42 X 3.92 MM

GRADING RESULTS

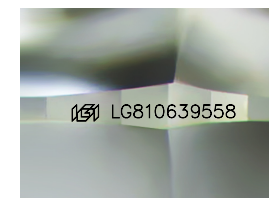
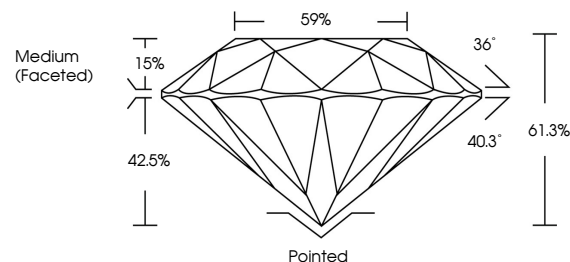
Carat Weight 1.00 CARAT Color Grade FANCY VIVID GREEN Clarity Grade VS 2 Cut Grade IDEAL

ADDITIONAL GRADING INFORMATION

Polish EXCELLENT Symmetry EXCELLENT Fluorescence NONE Inscription(s) IGI LG810639558

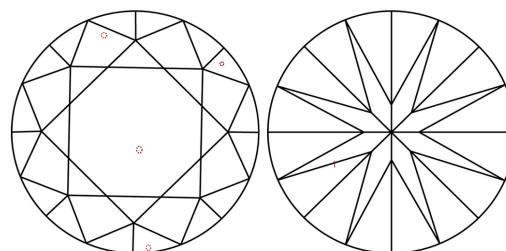
Comments: This Laboratory Grown Diamond was created by Chemical Vapor Deposition (CVD) growth process. Indications of post-growth treatment.

PROPORTIONS



Sample Image Used

CLARITY CHARACTERISTICS



KEY TO SYMBOLS

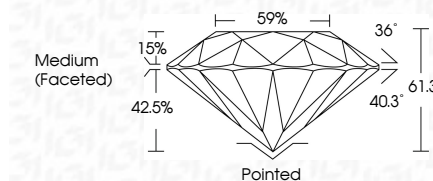
Red symbols indicate internal characteristics. Green symbols indicate external characteristics.

COLOR

D E F G H I J Faint Very Light Light

CLARITY

Table with columns: FL, IF, VS 1-2, VS 1-2, SI 1-2, I 1-3 and corresponding descriptions: Flawless, Internally Flawless, Very Very Slightly Included, Very Slightly Included, Slightly Included, Included.



ADDITIONAL GRADING INFORMATION

Polish EXCELLENT Symmetry EXCELLENT Fluorescence NONE Inscription(s) IGI LG810639558 Comments: This Laboratory Grown Diamond was created by Chemical Vapor Deposition (CVD) growth process. Indications of post-growth treatment.



Summary of report details including date, report number, description, measurements, grading results, and additional information.