



**ELECTRONIC COPY**

LG810637746  
Report verification at igi.org



June 22, 2026  
IGI Report Number **LG810637746**  
Description **LABORATORY GROWN DIAMOND**  
Shape and Cutting Style **OLD EUROPEAN CUT**  
Measurements **12.72 - 12.83 X 6.89 MM**  
**GRADING RESULTS**  
Carat Weight **7.12 CARATS**  
Color Grade **E**  
Clarity Grade **VVS 2**

June 22, 2026  
IGI Report Number **LG810637746**  
Description **LABORATORY GROWN DIAMOND**  
Shape and Cutting Style **OLD EUROPEAN CUT**  
Measurements **12.72 - 12.83 X 6.89 MM**

**GRADING RESULTS**

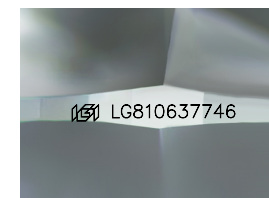
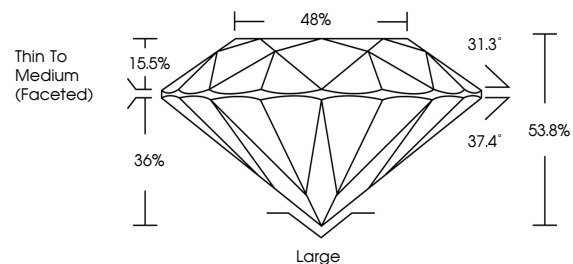
Carat Weight **7.12 CARATS**  
Color Grade **E**  
Clarity Grade **VVS 2**

**ADDITIONAL GRADING INFORMATION**

Polish **EXCELLENT**  
Symmetry **EXCELLENT**  
Fluorescence **NONE**  
Inscription(s) **IGI LG810637746**

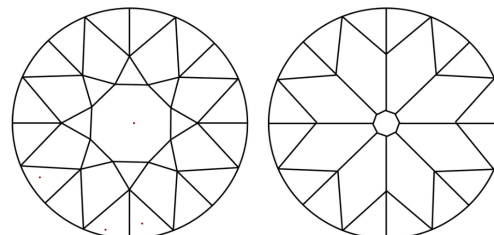
Comments: This Laboratory Grown Diamond was created by Chemical Vapor Deposition (CVD) growth process.  
Type IIa

**PROPORTIONS**



Sample Image Used

**CLARITY CHARACTERISTICS**



**KEY TO SYMBOLS**

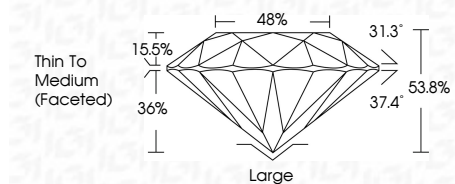
Red symbols indicate internal characteristics.  
Green symbols indicate external characteristics.

**COLOR**

D E F G H I J Faint Very Light Light

**CLARITY**

FL	IF	VVS <sup>1-2</sup>	VS <sup>1-2</sup>	SI <sup>1-2</sup>	I <sup>1-3</sup>
Flawless	Internally Flawless	Very Very Slightly Included	Very Slightly Included	Slightly Included	Included



**ADDITIONAL GRADING INFORMATION**

Polish **EXCELLENT**  
Symmetry **EXCELLENT**  
Fluorescence **NONE**  
Inscription(s) **IGI LG810637746**  
Comments: This Laboratory Grown Diamond was created by Chemical Vapor Deposition (CVD) growth process.  
Type IIa



**IGI**



June 22, 2026  
IGI Report No. LG810637746  
**OLD EUROPEAN CUT**  
12.72 - 12.83 X 6.89 MM  
7.12 CARATS  
E  
VVS 2  
63.0%  
48%  
Thin To Medium (Faceted)  
Large  
EXCELLENT  
EXCELLENT  
NONE  
IGI LG810637746  
Comments: This Laboratory Grown Diamond was created by Chemical Vapor Deposition (CVD) growth process.  
Type IIa