



June 17, 2026

IGI Report Number LG810637577

OVAL BRILLIANT

LABORATORY GROWN DIAMOND

7.02 X 5.08 X 3.04 MM

Carat Weight 0.71 CARAT

Color Grade E

Clarity Grade VS 1

Polish VERY GOOD

Symmetry VERY GOOD

Fluorescence NONE

Inscription(s) IGI LG810637577

Comments: As Grown - No indication of post-growth treatment. This Laboratory Grown Diamond was created by High Pressure High Temperature (HPHT) growth process. Type II

**LABORATORY GROWN DIAMOND REPORT**

June 17, 2026

IGI Report Number

LG810637577

Description

LABORATORY GROWN DIAMOND

Shape and Cutting Style

OVAL BRILLIANT

Measurements

7.02 X 5.08 X 3.04 MM

**GRADING RESULTS**

Carat Weight

0.71 CARAT

Color Grade

E

Clarity Grade

VS 1

**ADDITIONAL GRADING INFORMATION**

Polish

VERY GOOD

Symmetry

VERY GOOD

Fluorescence

NONE

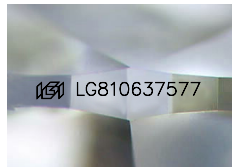
Inscription(s)

IGI LG810637577

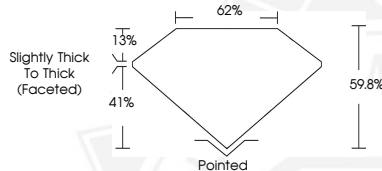
Comments: As Grown - No indication of post-growth treatment.

This Laboratory Grown Diamond was created by High Pressure High Temperature (HPHT) growth process.

Type II



Sample Image Used



June 17, 2026

IGI Report Number LG810637577

OVAL BRILLIANT

LABORATORY GROWN DIAMOND

7.02 X 5.08 X 3.04 MM

Carat Weight 0.71 CARAT

Color Grade E

Clarity Grade VS 1

Polish VERY GOOD

Symmetry VERY GOOD

Fluorescence NONE

Inscription(s) IGI LG810637577

Comments: As Grown - No indication of post-growth treatment. This Laboratory Grown Diamond was created by High Pressure High Temperature (HPHT) growth process. Type II



THIS DOCUMENT WAS PRODUCED WITH THE FOLLOWING SECURITY MEASURES: SPECIAL DOCUMENT PAPER, INK SCREENS, WATERMARK, BACKGROUND DESIGNS, HOLOGRAM AND OTHER SECURITY FEATURES NOT LISTED AND DO EXCEED DOCUMENT SECURITY INDUSTRY GUIDELINES.