



**ELECTRONIC COPY**

LG810625983  
Report verification at igi.org



June 16, 2026

IGI Report Number **LG810625983**

Description **LABORATORY GROWN DIAMOND**

Shape and Cutting Style **ROUND BRILLIANT**

Measurements **6.46 - 6.49 X 3.99 MM**

**GRADING RESULTS**

Carat Weight **1.04 CARAT**

Color Grade **D**

Clarity Grade **VVS 2**

Cut Grade **EXCELLENT**

June 16, 2026

IGI Report Number **LG810625983**

Description **LABORATORY GROWN DIAMOND**

Shape and Cutting Style **ROUND BRILLIANT**

Measurements **6.46 - 6.49 X 3.99 MM**

**GRADING RESULTS**

Carat Weight **1.04 CARAT**

Color Grade **D**

Clarity Grade **VVS 2**

Cut Grade **EXCELLENT**

**ADDITIONAL GRADING INFORMATION**

Polish **EXCELLENT**

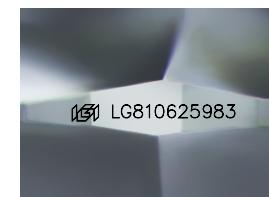
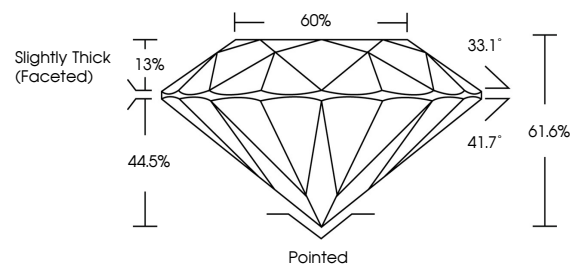
Symmetry **EXCELLENT**

Fluorescence **NONE**

Inscription(s) **IGI LG810625983**

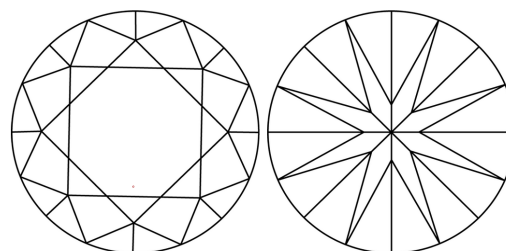
Comments: This Laboratory Grown Diamond was created by Chemical Vapor Deposition (CVD) growth process. Type IIa

**PROPORTIONS**



Sample Image Used

**CLARITY CHARACTERISTICS**



**KEY TO SYMBOLS**

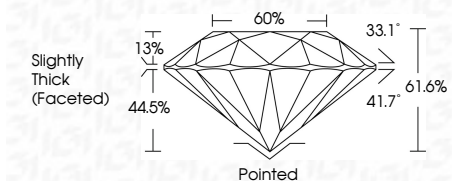
Red symbols indicate internal characteristics.  
Green symbols indicate external characteristics.

**COLOR**

D E F G H I J Faint Very Light Light

**CLARITY**

| FL       | IF                  | VVS <sup>1-2</sup>          | VS <sup>1-2</sup>      | SI <sup>1-2</sup> | I <sup>1-3</sup> |
|----------|---------------------|-----------------------------|------------------------|-------------------|------------------|
| Flawless | Internally Flawless | Very Very Slightly Included | Very Slightly Included | Slightly Included | Included         |



**ADDITIONAL GRADING INFORMATION**

Polish **EXCELLENT**

Symmetry **EXCELLENT**

Fluorescence **NONE**

Inscription(s) **IGI LG810625983**

Comments: This Laboratory Grown Diamond was created by Chemical Vapor Deposition (CVD) growth process. Type IIa



**IGI**



|                 |                           |             |           |       |           |        |     |                          |         |           |              |                |                                                                                                                 |
|-----------------|---------------------------|-------------|-----------|-------|-----------|--------|-----|--------------------------|---------|-----------|--------------|----------------|-----------------------------------------------------------------------------------------------------------------|
| June 16, 2026   | IGI Report No LG810625983 | 1.04 CARAT  | D         | VVS 2 | EXCELLENT | 61.6%  | 60% | Slightly Thick (Faceted) | Pointed | EXCELLENT | EXCELLENT    | NONE           | IGI LG810625983                                                                                                 |
| ROUND BRILLIANT | 6.46 - 6.49 X 3.99 MM     | Color Grade | Cut Grade | Depth | Table     | Girdle |     |                          | Polish  | Symmetry  | Fluorescence | Inscription(s) | Comments: This Laboratory Grown Diamond was created by Chemical Vapor Deposition (CVD) growth process. Type IIa |