



ELECTRONIC COPY

LG810623725
Report verification at igi.org



June 16, 2026

IGI Report Number **LG810623725**

Description **LABORATORY GROWN DIAMOND**

Shape and Cutting Style **ROUND BRILLIANT**

Measurements **8.13 - 8.18 X 5.01 MM**

GRADING RESULTS

Carat Weight **2.08 CARATS**

Color Grade **D**

Clarity Grade **VS 1**

Cut Grade **IDEAL**

June 16, 2026

IGI Report Number **LG810623725**

Description **LABORATORY GROWN DIAMOND**

Shape and Cutting Style **ROUND BRILLIANT**

Measurements **8.13 - 8.18 X 5.01 MM**

GRADING RESULTS

Carat Weight **2.08 CARATS**

Color Grade **D**

Clarity Grade **VS 1**

Cut Grade **IDEAL**

ADDITIONAL GRADING INFORMATION

Polish **EXCELLENT**

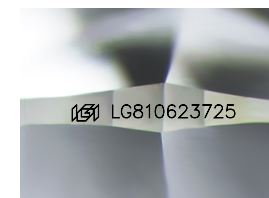
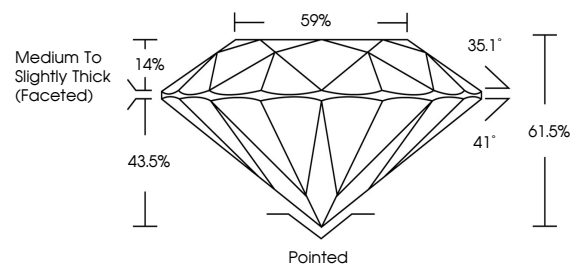
Symmetry **EXCELLENT**

Fluorescence **NONE**

Inscription(s) **LG810623725**

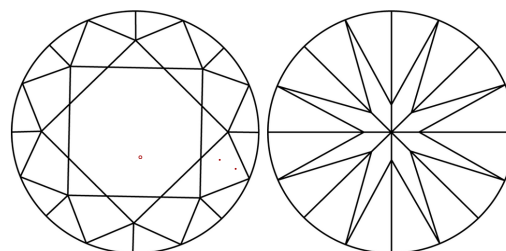
Comments: This Laboratory Grown Diamond was created by Chemical Vapor Deposition (CVD) growth process.
Type IIa

PROPORTIONS



Sample Image Used

CLARITY CHARACTERISTICS



KEY TO SYMBOLS

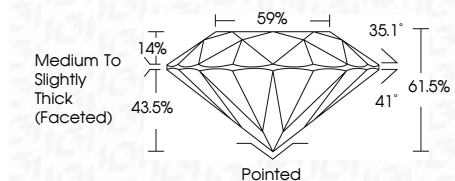
Red symbols indicate internal characteristics.
Green symbols indicate external characteristics.

COLOR

D E F G H I J Faint Very Light Light

CLARITY

FL	IF	VS ¹⁻²	VS ¹⁻²	SI ¹⁻²	I ¹⁻³
Flawless	Internally Flawless	Very Very Slightly Included	Very Slightly Included	Slightly Included	Included



ADDITIONAL GRADING INFORMATION

Polish **EXCELLENT**

Symmetry **EXCELLENT**

Fluorescence **NONE**

Inscription(s) **LG810623725**

Comments: This Laboratory Grown Diamond was created by Chemical Vapor Deposition (CVD) growth process.
Type IIa



IGI



June 16, 2026
IGI Report No LG810623725
ROUND BRILLIANT

2.08 CARATS
D

8.13 - 8.18 X 5.01 MM
Color Grade D
Clarity Grade VS 1
Cut Grade IDEAL
Depth 61.5%
Table 14%
Girdle 59%
Medium To Slightly Thick (Faceted)

Culet Pointed
Polish EXCELLENT
Symmetry EXCELLENT
Fluorescence NONE
Inscription(s) IGI LG810623725

Comments: This Laboratory Grown Diamond was created by Chemical Vapor Deposition (CVD) growth process.
Type IIa