



ELECTRONIC COPY

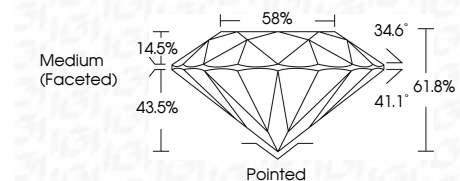
LG810622315
Report verification at igi.org



June 15, 2026
IGI Report Number **LG810622315**
Description **LABORATORY GROWN DIAMOND**
Shape and Cutting Style **ROUND BRILLIANT**
Measurements **8.07 - 8.11 X 5.00 MM**

GRADING RESULTS

Carat Weight **2.03 CARATS**
Color Grade **D**
Clarity Grade **VS 1**
Cut Grade **IDEAL**



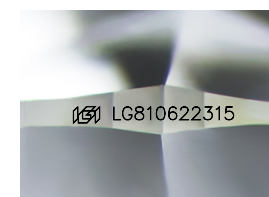
ADDITIONAL GRADING INFORMATION

Polish **EXCELLENT**
Symmetry **EXCELLENT**
Fluorescence **NONE**
Inscription(s) **IGI LG810622315**
Comments: This Laboratory Grown Diamond was created by Chemical Vapor Deposition (CVD) growth process. Type IIa



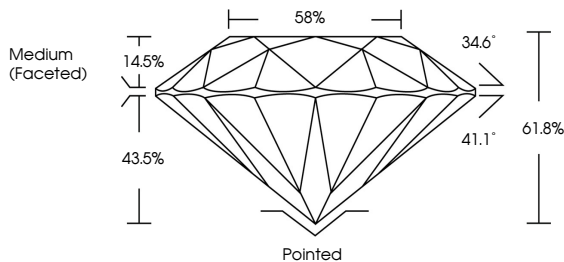
June 15, 2026	IGI Report No LG810622315	2.03 CARATS	D	VS 1	IDEAL	61.8%	58%	Medium (Faceted)	Pointed	EXCELLENT	EXCELLENT	NONE	IGI LG810622315
IGI Report No LG810622315	ROUND BRILLIANT	8.07 - 8.11 X 5.00 MM	Color Grade	Clarity Grade	Cut Grade	Depth	Table	Girdle	Culet	Polish	Symmetry	Fluorescence	Inscription(s)

Comments: This Laboratory Grown Diamond was created by Chemical Vapor Deposition (CVD) growth process. Type IIa

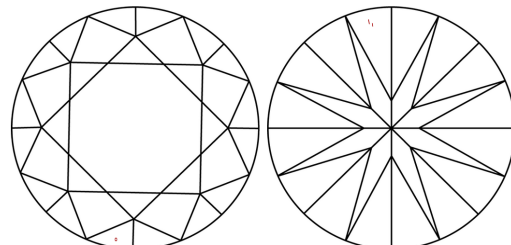


Sample Image Used

PROPORTIONS



CLARITY CHARACTERISTICS



KEY TO SYMBOLS

Red symbols indicate internal characteristics.
Green symbols indicate external characteristics.

COLOR

D E F G H I J Faint Very Light Light

CLARITY

FL	IF	VS ¹⁻²	VS ¹⁻²	SI ¹⁻²	I ¹⁻³
Flawless	Internally Flawless	Very Very Slightly Included	Very Slightly Included	Slightly Included	Included

