



ELECTRONIC COPY

LG810619822
Report verification at igi.org



June 18, 2026
IGI Report Number **LG810619822**
Description **LABORATORY GROWN DIAMOND**
Shape and Cutting Style **CUSHION MIXED CUT**
Measurements **8.40 X 6.25 X 4.33 MM**
GRADING RESULTS
Carat Weight **2.09 CARATS**
Color Grade **FANCY INTENSE YELLOW**
Clarity Grade **VVS 2**

June 18, 2026
IGI Report Number **LG810619822**
Description **LABORATORY GROWN DIAMOND**
Shape and Cutting Style **CUSHION MIXED CUT**
Measurements **8.40 X 6.25 X 4.33 MM**

GRADING RESULTS

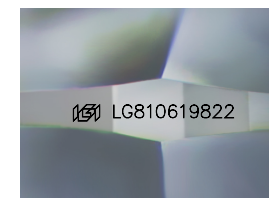
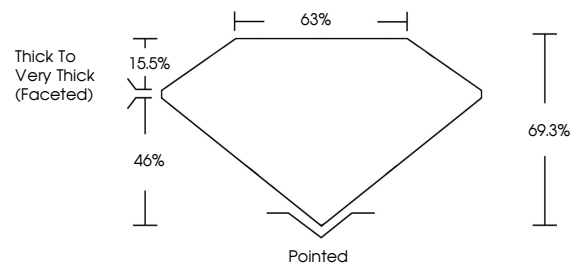
Carat Weight **2.09 CARATS**
Color Grade **FANCY INTENSE YELLOW**
Clarity Grade **VVS 2**

ADDITIONAL GRADING INFORMATION

Polish **EXCELLENT**
Symmetry **EXCELLENT**
Fluorescence **NONE**
Inscription(s) **LG810619822**

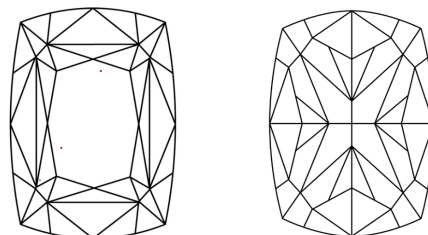
Comments: This Laboratory Grown Diamond was created by Chemical Vapor Deposition (CVD) growth process.

PROPORTIONS



Sample Image Used

CLARITY CHARACTERISTICS



KEY TO SYMBOLS

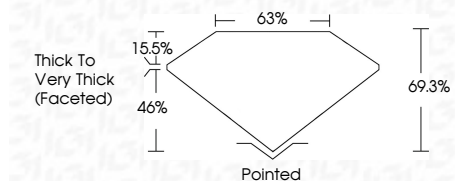
Red symbols indicate internal characteristics.
Green symbols indicate external characteristics.

COLOR

D E F G H I J Faint Very Light Light

CLARITY

FL	IF	VVS ¹⁻²	VS ¹⁻²	SI ¹⁻²	I ¹⁻³
Flawless	Internally Flawless	Very Very Slightly Included	Very Slightly Included	Slightly Included	Included



ADDITIONAL GRADING INFORMATION

Polish **EXCELLENT**
Symmetry **EXCELLENT**
Fluorescence **NONE**
Inscription(s) **LG810619822**
Comments: This Laboratory Grown Diamond was created by Chemical Vapor Deposition (CVD) growth process.



IGI



June 18, 2026
IGI Report No LG810619822
CUSHION MIXED CUT
8.40 X 6.25 X 4.33 MM
2.09 CARATS
FANCY INTENSE YELLOW
VVS 2
69.3%
63%
Thick to Very Thick (Faceted)
Pointed
EXCELLENT
EXCELLENT
NONE
IGI LG810619822
Comments: This Laboratory Grown Diamond was created by Chemical Vapor Deposition (CVD) growth process.