



ELECTRONIC COPY

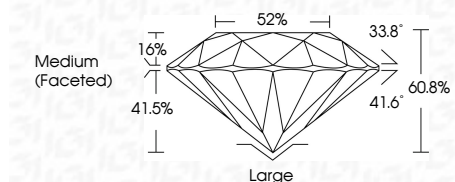
LG810619722 Report verification at igi.org



June 16, 2026 IGI Report Number LG810619722 Description LABORATORY GROWN DIAMOND Shape and Cutting Style OLD EUROPEAN CUT Measurements 6.54 - 6.59 X 3.99 MM

GRADING RESULTS

Carat Weight 1.10 CARAT Color Grade D Clarity Grade VVS 2



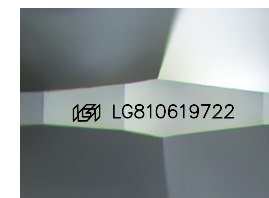
ADDITIONAL GRADING INFORMATION

Polish EXCELLENT Symmetry EXCELLENT Fluorescence NONE Inscription(s) LG810619722 Comments: This Laboratory Grown Diamond was created by Chemical Vapor Deposition (CVD) growth process. Type IIa



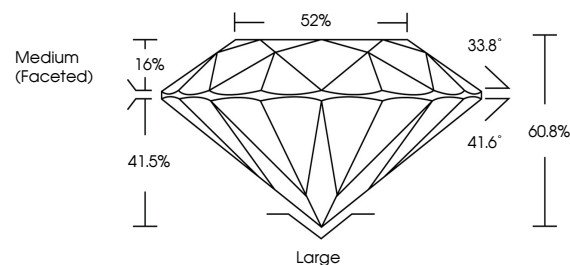
June 16, 2026 IGI Report No LG810619722 OLD EUROPEAN CUT 6.54 - 6.59 X 3.99 MM 1.10 CARAT D VS 2 60.8% 52% Medium (Faceted) Large EXCELLENT EXCELLENT NONE LG810619722

Comments: This Laboratory Grown Diamond was created by Chemical Vapor Deposition (CVD) growth process. Type IIa

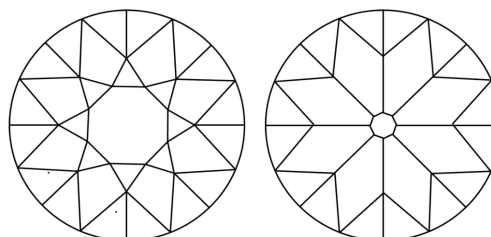


Sample Image Used

PROPORTIONS



CLARITY CHARACTERISTICS



KEY TO SYMBOLS

Red symbols indicate internal characteristics. Green symbols indicate external characteristics.

COLOR

D E F G H I J Faint Very Light Light

CLARITY

FL IF VS 1-2 VS 1-2 SI 1-2 I 1-3 Flawless Internally Flawless Very Very Slightly Included Very Slightly Included Slightly Included Included

