



**ELECTRONIC COPY**

LG810619098  
Report verification at igi.org



June 17, 2026  
IGI Report Number **LG810619098**  
Description **LABORATORY GROWN DIAMOND**  
Shape and Cutting Style **ROUND BRILLIANT**  
Measurements **8.04 - 8.07 X 4.96 MM**  
**GRADING RESULTS**  
Carat Weight **2.00 CARATS**  
Color Grade **FANCY VIVID BLUE**  
Clarity Grade **VS 1**  
Cut Grade **EXCELLENT**

June 17, 2026  
IGI Report Number **LG810619098**  
Description **LABORATORY GROWN DIAMOND**  
Shape and Cutting Style **ROUND BRILLIANT**  
Measurements **8.04 - 8.07 X 4.96 MM**

**GRADING RESULTS**

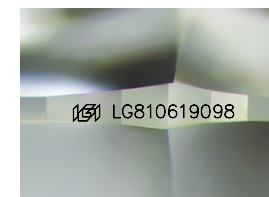
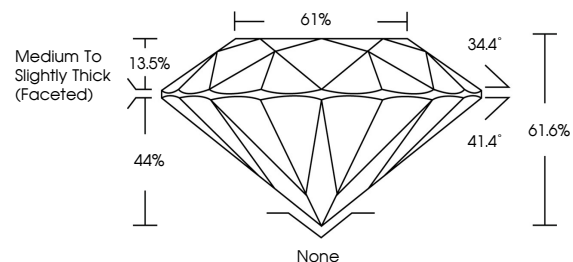
Carat Weight **2.00 CARATS**  
Color Grade **FANCY VIVID BLUE**  
Clarity Grade **VS 1**  
Cut Grade **EXCELLENT**

**ADDITIONAL GRADING INFORMATION**

Polish **EXCELLENT**  
Symmetry **EXCELLENT**  
Fluorescence **NONE**  
Inscription(s) **IGI LG810619098**

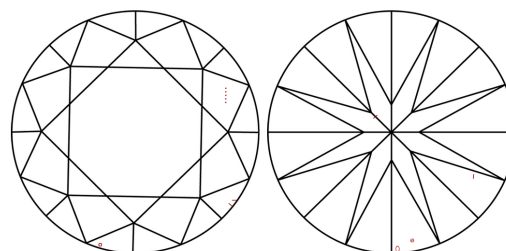
Comments: This Laboratory Grown Diamond was created by Chemical Vapor Deposition (CVD) growth process.  
Indications of post-growth treatment.

**PROPORTIONS**



Sample Image Used

**CLARITY CHARACTERISTICS**



**KEY TO SYMBOLS**

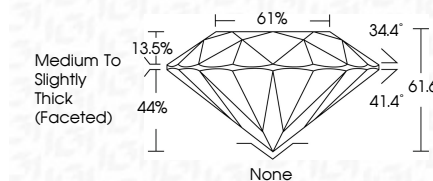
Red symbols indicate internal characteristics.  
Green symbols indicate external characteristics.

**COLOR**

D E F G H I J Faint Very Light Light

**CLARITY**

FL	IF	VS <sup>1-2</sup>	VS <sup>1-2</sup>	SI <sup>1-2</sup>	I <sup>1-3</sup>
Flawless	Internally Flawless	Very Very Slightly Included	Very Slightly Included	Slightly Included	Included



**ADDITIONAL GRADING INFORMATION**

Polish **EXCELLENT**  
Symmetry **EXCELLENT**  
Fluorescence **NONE**  
Inscription(s) **IGI LG810619098**  
Comments: This Laboratory Grown Diamond was created by Chemical Vapor Deposition (CVD) growth process.  
Indications of post-growth treatment.



June 17, 2026  
IGI Report No LG810619098  
**ROUND BRILLIANT**  
8.04 - 8.07 X 4.96 MM  
2.00 CARATS  
FANCY VIVID BLUE  
VS 1  
EXCELLENT  
61.6%  
61%  
Medium To Slightly Thick (Faceted)  
None  
EXCELLENT  
EXCELLENT  
NONE  
IGI LG810619098  
Comments: This Laboratory Grown Diamond was created by Chemical Vapor Deposition (CVD) growth process.  
Indications of post-growth treatment.