



ELECTRONIC COPY

LG810616681
Report verification at igi.org



June 17, 2026
IGI Report Number **LG810616681**
Description **LABORATORY GROWN DIAMOND**
Shape and Cutting Style **ROUND BRILLIANT**
Measurements **6.52 - 6.55 X 3.93 MM**
GRADING RESULTS
Carat Weight **1.03 CARAT**
Color Grade **FANCY LIGHT YELLOW**
Clarity Grade **VS 1**
Cut Grade **VERY GOOD**

June 17, 2026
IGI Report Number **LG810616681**
Description **LABORATORY GROWN DIAMOND**
Shape and Cutting Style **ROUND BRILLIANT**
Measurements **6.52 - 6.55 X 3.93 MM**

GRADING RESULTS

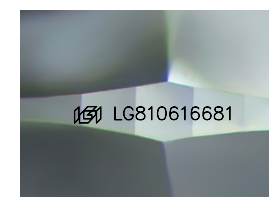
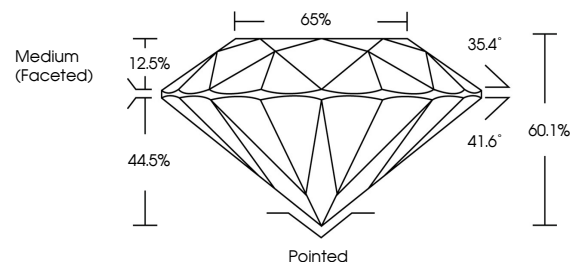
Carat Weight **1.03 CARAT**
Color Grade **FANCY LIGHT YELLOW**
Clarity Grade **VS 1**
Cut Grade **VERY GOOD**

ADDITIONAL GRADING INFORMATION

Polish **VERY GOOD**
Symmetry **VERY GOOD**
Fluorescence **NONE**
Inscription(s) **LG810616681**

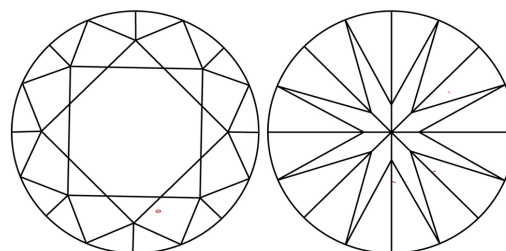
Comments: As Grown - No indication of post-growth treatment.
This Laboratory Grown Diamond was created by High Pressure High Temperature (HPHT) growth process.

PROPORTIONS



Sample Image Used

CLARITY CHARACTERISTICS



KEY TO SYMBOLS

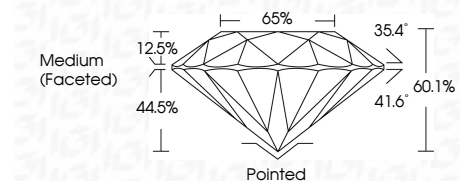
Red symbols indicate internal characteristics.
Green symbols indicate external characteristics.

COLOR

D E F G H I J Faint Very Light Light

CLARITY

FL	IF	VS ¹⁻²	VS ¹⁻²	SI ¹⁻²	I ¹⁻³
Flawless	Internally Flawless	Very Very Slightly Included	Very Slightly Included	Slightly Included	Included



ADDITIONAL GRADING INFORMATION

Polish **VERY GOOD**
Symmetry **VERY GOOD**
Fluorescence **NONE**
Inscription(s) **LG810616681**
Comments: As Grown - No indication of post-growth treatment.
This Laboratory Grown Diamond was created by High Pressure High Temperature (HPHT) growth process.



June 17, 2026
IGI Report No LG810616681
ROUND BRILLIANT
6.52 - 6.55 X 3.93 MM
1.03 CARAT
FANCY LIGHT YELLOW
VS 1
VERY GOOD
60.1%
65%
Medium (Faceted)
Pointed
VERY GOOD
VERY GOOD
NONE
None
IGI LG810616681
Comments: As Grown - No indication of post-growth treatment.
This Laboratory Grown Diamond was created by High Pressure High Temperature (HPHT) growth process.