



**ELECTRONIC COPY**

LG810616673  
Report verification at igi.org



June 17, 2026  
IGI Report Number **LG810616673**  
Description **LABORATORY GROWN DIAMOND**  
Shape and Cutting Style **PRINCESS CUT**  
Measurements **5.53 X 5.45 X 3.61 MM**  
**GRADING RESULTS**  
Carat Weight **1.02 CARAT**  
Color Grade **FANCY VIVID GREEN**  
Clarity Grade **VS 1**

June 17, 2026  
IGI Report Number **LG810616673**  
Description **LABORATORY GROWN DIAMOND**  
Shape and Cutting Style **PRINCESS CUT**  
Measurements **5.53 X 5.45 X 3.61 MM**

**GRADING RESULTS**

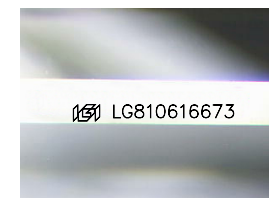
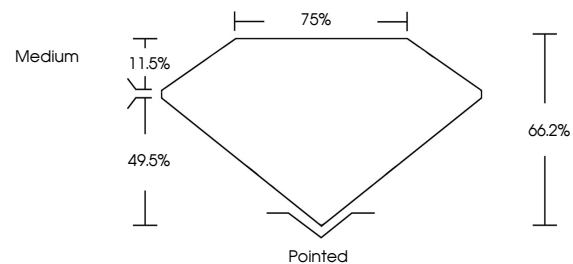
Carat Weight **1.02 CARAT**  
Color Grade **FANCY VIVID GREEN**  
Clarity Grade **VS 1**

**ADDITIONAL GRADING INFORMATION**

Polish **EXCELLENT**  
Symmetry **EXCELLENT**  
Fluorescence **NONE**  
Inscription(s) **IGI LG810616673**

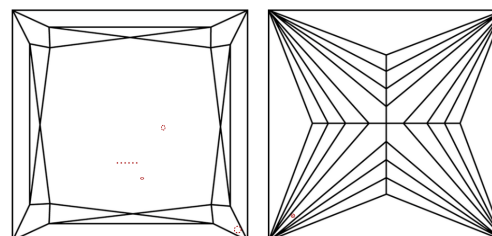
Comments: This Laboratory Grown Diamond was created by Chemical Vapor Deposition (CVD) growth process.  
Indications of post-growth treatment.

**PROPORTIONS**



Sample Image Used

**CLARITY CHARACTERISTICS**



**KEY TO SYMBOLS**

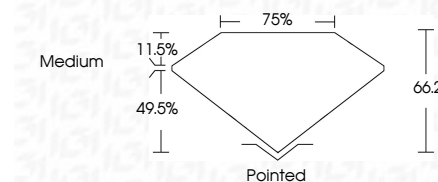
Red symbols indicate internal characteristics.  
Green symbols indicate external characteristics.

**COLOR**

D E F G H I J Faint Very Light Light

**CLARITY**

FL	IF	VS <sup>1-2</sup>	VS <sup>1-2</sup>	SI <sup>1-2</sup>	I <sup>1-3</sup>
Flawless	Internally Flawless	Very Very Slightly Included	Very Slightly Included	Slightly Included	Included



**ADDITIONAL GRADING INFORMATION**

Polish **EXCELLENT**  
Symmetry **EXCELLENT**  
Fluorescence **NONE**  
Inscription(s) **IGI LG810616673**  
Comments: This Laboratory Grown Diamond was created by Chemical Vapor Deposition (CVD) growth process.  
Indications of post-growth treatment.



**IGI**



June 17, 2026  
IGI Report No. LG810616673  
**PRINCESS CUT**  
1.02 CARAT  
5.53 X 5.45 X 3.61 MM  
FANCY VIVID GREEN  
VS 1  
66.2%  
75%  
Medium  
Pointed  
EXCELLENT  
EXCELLENT  
NONE  
IGI LG810616673  
Comments: This Laboratory Grown Diamond was created by Chemical Vapor Deposition (CVD) growth process.  
Indications of post-growth treatment.