



ELECTRONIC COPY

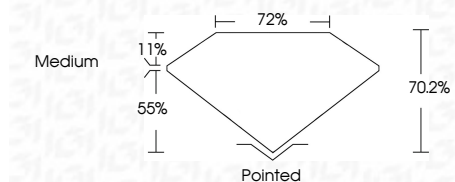
LG810616239
Report verification at igi.org



June 16, 2026
IGI Report Number **LG810616239**
Description **LABORATORY GROWN DIAMOND**
Shape and Cutting Style **PRINCESS CUT**
Measurements **10.03 X 9.90 X 6.95 MM**

GRADING RESULTS

Carat Weight **6.05 CARATS**
Color Grade **F**
Clarity Grade **VS 1**



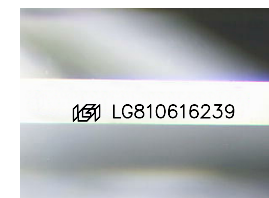
ADDITIONAL GRADING INFORMATION

Polish **EXCELLENT**
Symmetry **EXCELLENT**
Fluorescence **NONE**
Inscription(s) **IGI LG810616239**
Comments: This Laboratory Grown Diamond was created by Chemical Vapor Deposition (CVD) growth process. Type IIa



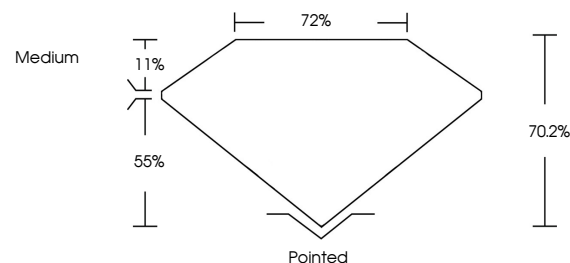
IGI

June 16, 2026
IGI Report No. LG810616239
PRINCESS CUT
10.03 X 9.90 X 6.95 MM
6.05 CARATS
F
VS 1
70.2%
72%
Medium
Pointed
EXCELLENT
EXCELLENT
NONE
IGI LG810616239
Comments: This Laboratory Grown Diamond was created by Chemical Vapor Deposition (CVD) growth process. Type IIa

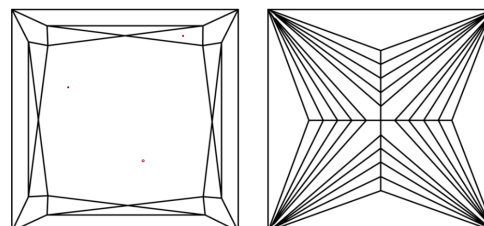


Sample Image Used

PROPORTIONS



CLARITY CHARACTERISTICS



KEY TO SYMBOLS

Red symbols indicate internal characteristics.
Green symbols indicate external characteristics.

COLOR

D E F G H I J Faint Very Light Light

CLARITY

FL	IF	VS ¹⁻²	VS ¹⁻²	SI ¹⁻²	I ¹⁻³
Flawless	Internally Flawless	Very Very Slightly Included	Very Slightly Included	Slightly Included	Included

