



ELECTRONIC COPY

LG810616197
Report verification at igi.org



June 18, 2026

IGI Report Number **LG810616197**

Description **LABORATORY GROWN DIAMOND**

Shape and Cutting Style **PRINCESS CUT**

Measurements **9.08 X 8.97 X 6.53 MM**

GRADING RESULTS

Carat Weight **4.65 CARATS**

Color Grade **F**

Clarity Grade **VVS 2**

June 18, 2026
IGI Report Number **LG810616197**
Description **LABORATORY GROWN DIAMOND**
Shape and Cutting Style **PRINCESS CUT**
Measurements **9.08 X 8.97 X 6.53 MM**

GRADING RESULTS

Carat Weight **4.65 CARATS**

Color Grade **F**

Clarity Grade **VVS 2**

ADDITIONAL GRADING INFORMATION

Polish **EXCELLENT**

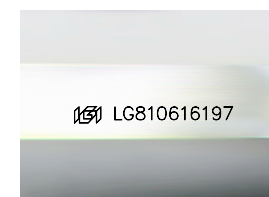
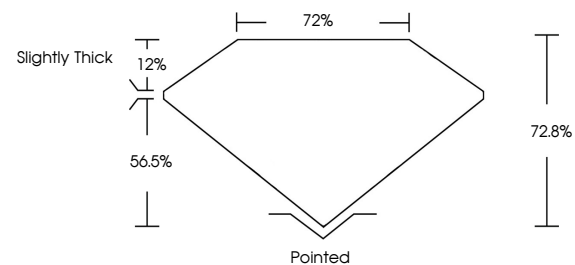
Symmetry **EXCELLENT**

Fluorescence **NONE**

Inscription(s) **IGI LG810616197**

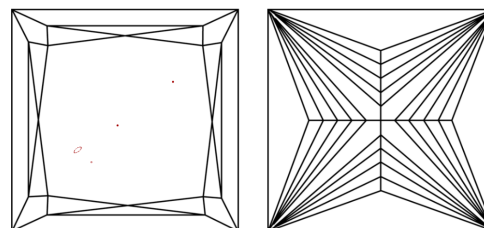
Comments: This Laboratory Grown Diamond was created by Chemical Vapor Deposition (CVD) growth process.
Type IIa

PROPORTIONS



Sample Image Used

CLARITY CHARACTERISTICS



KEY TO SYMBOLS

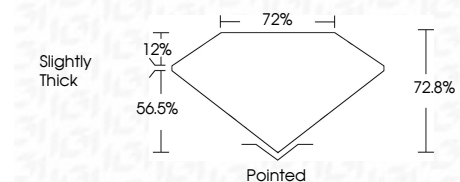
Red symbols indicate internal characteristics.
Green symbols indicate external characteristics.

COLOR

D E F G H I J Faint Very Light Light

CLARITY

FL	IF	VVS ¹⁻²	VS ¹⁻²	SI ¹⁻²	I ¹⁻³
Flawless	Internally Flawless	Very Very Slightly Included	Very Slightly Included	Slightly Included	Included



ADDITIONAL GRADING INFORMATION

Polish **EXCELLENT**

Symmetry **EXCELLENT**

Fluorescence **NONE**

Inscription(s) **IGI LG810616197**

Comments: This Laboratory Grown Diamond was created by Chemical Vapor Deposition (CVD) growth process.
Type IIa



June 18, 2026
IGI Report No. LG810616197
PRINCESS CUT
9.08 X 8.97 X 6.53 MM
4.65 CARATS
F
4.65 CARATS
VVS 2
72.0%
72%
Slightly Thick
Pointed
EXCELLENT
EXCELLENT
NONE
IGI LG810616197
Comments: This Laboratory Grown Diamond was created by Chemical Vapor Deposition (CVD) growth process.
Type IIa