



ELECTRONIC COPY

LG810616175
Report verification at igi.org



June 17, 2026
IGI Report Number LG810616175
Description LABORATORY GROWN DIAMOND
Shape and Cutting Style HEXAGONAL MODIFIED BRILLIANT
Measurements 14.51 X 7.19 X 5.08 MM
GRADING RESULTS
Carat Weight 3.51 CARATS
Color Grade D
Clarity Grade VVS 2

LABORATORY GROWN DIAMOND REPORT

June 17, 2026
IGI Report Number LG810616175
Description LABORATORY GROWN DIAMOND
Shape and Cutting Style HEXAGONAL MODIFIED BRILLIANT
Measurements 14.51 X 7.19 X 5.08 MM

GRADING RESULTS

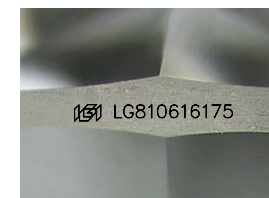
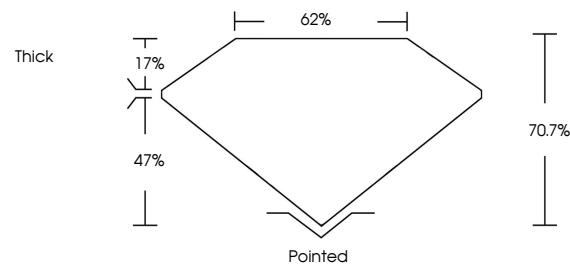
Carat Weight 3.51 CARATS
Color Grade D
Clarity Grade VVS 2

ADDITIONAL GRADING INFORMATION

Polish EXCELLENT
Symmetry EXCELLENT
Fluorescence NONE
Inscription(s) IGI LG810616175

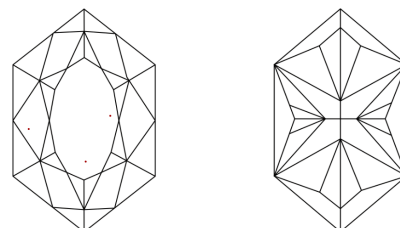
Comments: This Laboratory Grown Diamond was created by Chemical Vapor Deposition (CVD) growth process. Type IIa

PROPORTIONS



Sample Image Used

CLARITY CHARACTERISTICS



KEY TO SYMBOLS

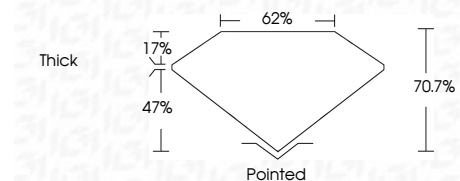
Red symbols indicate internal characteristics.
Green symbols indicate external characteristics.

COLOR

D E F G H I J Faint Very Light Light

CLARITY

FL IF VVS 1-2 VS 1-2 SI 1-2 I 1-3
Flawless Internally Flawless Very Very Slightly Included Very Slightly Included Slightly Included Included



ADDITIONAL GRADING INFORMATION

Polish EXCELLENT
Symmetry EXCELLENT
Fluorescence NONE
Inscription(s) IGI LG810616175
Comments: This Laboratory Grown Diamond was created by Chemical Vapor Deposition (CVD) growth process. Type IIa



June 17, 2026
IGI Report No LG810616175
HEXAGONAL MODIFIED BRILLIANT
14.51 X 7.19 X 5.08 MM
3.51 CARATS
D
VVS 2
70.7%
62%
Thick
Pointed
EXCELLENT
EXCELLENT
NONE
IGI LG810616175
Comments: This Laboratory Grown Diamond was created by Chemical Vapor Deposition (CVD) growth process. Type IIa