



ELECTRONIC COPY

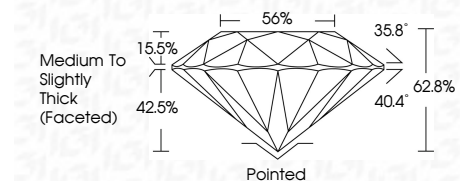
LG810614706 Report verification at igi.org



June 16, 2026 IGI Report Number LG810614706 Description LABORATORY GROWN DIAMOND Shape and Cutting Style ROUND BRILLIANT Measurements 7.53 - 7.58 X 4.74 MM

GRADING RESULTS

Carat Weight 1.70 CARAT Color Grade F Clarity Grade VVS 2 Cut Grade EXCELLENT



ADDITIONAL GRADING INFORMATION

Polish EXCELLENT Symmetry EXCELLENT Fluorescence NONE Inscription(s) LG810614706 Comments: This Laboratory Grown Diamond was created by Chemical Vapor Deposition (CVD) growth process. Type IIa



June 16, 2026 IGI Report No LG810614706 ROUND BRILLIANT 1.70 CARAT F VVS 2 EXCELLENT 62.5% 56% Medium To Slightly Thick (Faceted) Pointed EXCELLENT EXCELLENT NONE NONE LG810614706

June 16, 2026 IGI Report Number LG810614706 Description LABORATORY GROWN DIAMOND Shape and Cutting Style ROUND BRILLIANT Measurements 7.53 - 7.58 X 4.74 MM

GRADING RESULTS

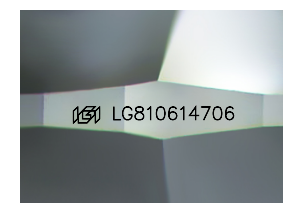
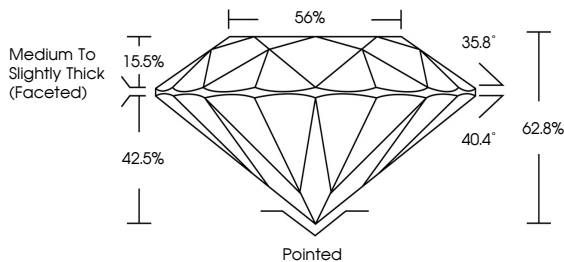
Carat Weight 1.70 CARAT Color Grade F Clarity Grade VVS 2 Cut Grade EXCELLENT

ADDITIONAL GRADING INFORMATION

Polish EXCELLENT Symmetry EXCELLENT Fluorescence NONE Inscription(s) LG810614706

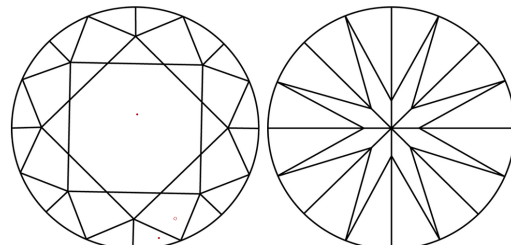
Comments: This Laboratory Grown Diamond was created by Chemical Vapor Deposition (CVD) growth process. Type IIa

PROPORTIONS



Sample Image Used

CLARITY CHARACTERISTICS



KEY TO SYMBOLS

Red symbols indicate internal characteristics. Green symbols indicate external characteristics.

COLOR

D E F G H I J Faint Very Light Light

CLARITY

FL IF VVS 1-2 VS 1-2 SI 1-2 I 1-3 Flawless Internally Flawless Very Very Slightly Included Very Slightly Included Slightly Included Included



THIS DOCUMENT WAS PRODUCED WITH THE FOLLOWING SECURITY MEASURES: SPECIAL DOCUMENT PAPER, INK SCREENS, WATERMARK BACKGROUND DESIGNS, HOLOGRAM AND OTHER SECURITY FEATURES NOT LISTED AND DO EXCEED DOCUMENT SECURITY INDUSTRY GUIDELINES.