



INTERNATIONAL GEMOLOGICAL INSTITUTE

ELECTRONIC COPY

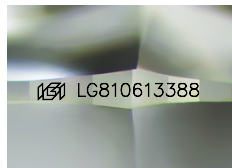


June 15, 2026

IGI Report Number LG810613388
ROUND BRILLIANT
LABORATORY GROWN DIAMOND
5.64 - 5.68 X 3.50 MM

LABORATORY GROWN DIAMOND REPORT

June 15, 2026
IGI Report Number LG810613388
Description LABORATORY GROWN DIAMOND
Shape and Cutting Style ROUND BRILLIANT
Measurements 5.64 - 5.68 X 3.50 MM



Sample Image Used

GRADING RESULTS

Carat Weight 0.70 CARAT
Color Grade D
Clarity Grade VVS 1
Cut Grade EXCELLENT

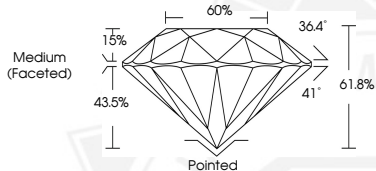
ADDITIONAL GRADING INFORMATION

Polish EXCELLENT
Symmetry EXCELLENT
Fluorescence NONE
Inscription(s) IGI LG810613388

Comments: As Grown - No indication of post-growth treatment. This Laboratory Grown Diamond was created by High Pressure High Temperature (HPHT) growth process. Type II

0.70 CARAT
D
VVS 1
EXCELLENT
EXCELLENT
EXCELLENT
NONE
IGI LG810613388

Comments: As Grown - No indication of post-growth treatment. This Laboratory Grown Diamond was created by High Pressure High Temperature (HPHT) growth process. Type II



June 15, 2026

IGI Report Number LG810613388
ROUND BRILLIANT
LABORATORY GROWN DIAMOND
5.64 - 5.68 X 3.50 MM

0.70 CARAT
D
VVS 1
EXCELLENT
EXCELLENT
EXCELLENT
NONE
IGI LG810613388

Comments: As Grown - No indication of post-growth treatment. This Laboratory Grown Diamond was created by High Pressure High Temperature (HPHT) growth process. Type II



THIS DOCUMENT WAS PRODUCED WITH THE FOLLOWING SECURITY MEASURES: SPECIAL DOCUMENT PAPER, INK SCREENS, WATERMARK, BACKGROUND DESIGNS, HOLOGRAM AND OTHER SECURITY FEATURES NOT LISTED AND DO EXCEED DOCUMENT SECURITY INDUSTRY GUIDELINES.

For terms & conditions and to verify this report, please visit www.igi.org