



**ELECTRONIC COPY**

LG809698829  
Report verification at [igi.org](http://igi.org)



June 13, 2026  
IGI Report Number **LG809698829**  
Description **LABORATORY GROWN DIAMOND**  
Shape and Cutting Style **PEAR BRILLIANT**  
Measurements **8.82 X 5.57 X 3.61 MM**  
**GRADING RESULTS**  
Carat Weight **1.05 CARAT**  
Color Grade **D**  
Clarity Grade **VVS 2**

June 13, 2026  
IGI Report Number **LG809698829**  
Description **LABORATORY GROWN DIAMOND**  
Shape and Cutting Style **PEAR BRILLIANT**  
Measurements **8.82 X 5.57 X 3.61 MM**

**GRADING RESULTS**

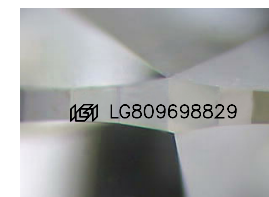
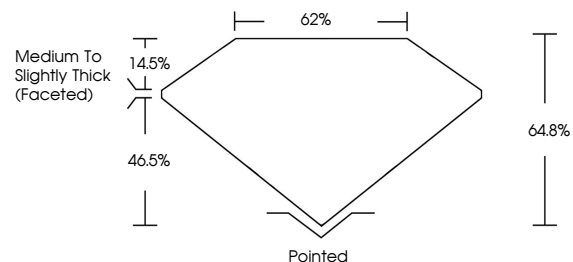
Carat Weight **1.05 CARAT**  
Color Grade **D**  
Clarity Grade **VVS 2**

**ADDITIONAL GRADING INFORMATION**

Polish **EXCELLENT**  
Symmetry **EXCELLENT**  
Fluorescence **NONE**  
Inscription(s) **IGI LG809698829**

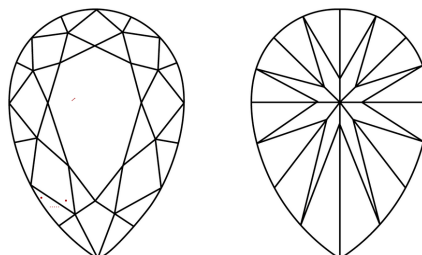
Comments: This Laboratory Grown Diamond was created by Chemical Vapor Deposition (CVD) growth process.  
Type IIa

**PROPORTIONS**



Sample Image Used

**CLARITY CHARACTERISTICS**



**KEY TO SYMBOLS**

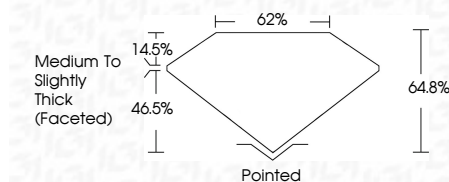
Red symbols indicate internal characteristics.  
Green symbols indicate external characteristics.

**COLOR**

D E F G H I J Faint Very Light Light

**CLARITY**

FL	IF	VVS <sup>1-2</sup>	VS <sup>1-2</sup>	SI <sup>1-2</sup>	I <sup>1-3</sup>
Flawless	Internally Flawless	Very Very Slightly Included	Very Slightly Included	Slightly Included	Included



**ADDITIONAL GRADING INFORMATION**

Polish **EXCELLENT**  
Symmetry **EXCELLENT**  
Fluorescence **NONE**  
Inscription(s) **IGI LG809698829**  
Comments: This Laboratory Grown Diamond was created by Chemical Vapor Deposition (CVD) growth process.  
Type IIa



**IGI**



June 13, 2026  
IGI Report No. **LG809698829**  
**PEAR BRILLIANT**  
8.82 X 5.57 X 3.61 MM  
Carat Weight **1.05 CARAT**  
Color Grade **D**  
Clarity Grade **VVS 2**  
Table **14.5%**  
Depth **46.5%**  
Girdle **62%**  
Medium to Slightly Thick (Faceted)  
Culet **Pointed**  
Polish **EXCELLENT**  
Symmetry **EXCELLENT**  
Fluorescence **NONE**  
Inscription(s) **IGI LG809698829**  
Comments: This Laboratory Grown Diamond was created by Chemical Vapor Deposition (CVD) growth process.  
Type IIa