



**ELECTRONIC COPY**

LG809691654  
Report verification at igi.org



June 17, 2026  
IGI Report Number **LG809691654**  
Description **LABORATORY GROWN DIAMOND**  
Shape and Cutting Style **CUSHION MODIFIED BRILLIANT**  
Measurements **9.63 X 7.76 X 5.40 MM**  
**GRADING RESULTS**  
Carat Weight **3.62 CARATS**  
Color Grade **FANCY VIVID YELLOW**  
Clarity Grade **VS 2**

June 17, 2026  
IGI Report Number **LG809691654**  
Description **LABORATORY GROWN DIAMOND**  
Shape and Cutting Style **CUSHION MODIFIED BRILLIANT**  
Measurements **9.63 X 7.76 X 5.40 MM**

**GRADING RESULTS**

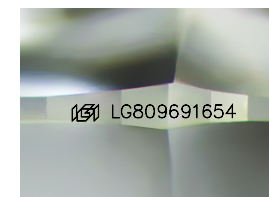
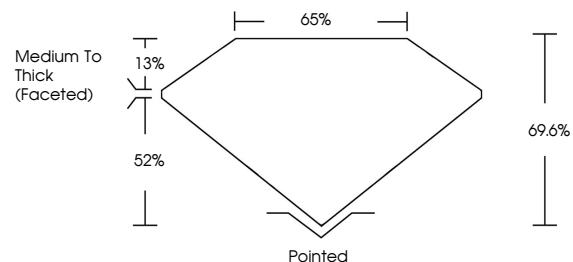
Carat Weight **3.62 CARATS**  
Color Grade **FANCY VIVID YELLOW**  
Clarity Grade **VS 2**

**ADDITIONAL GRADING INFORMATION**

Polish **EXCELLENT**  
Symmetry **EXCELLENT**  
Fluorescence **NONE**  
Inscription(s) **IGI LG809691654**

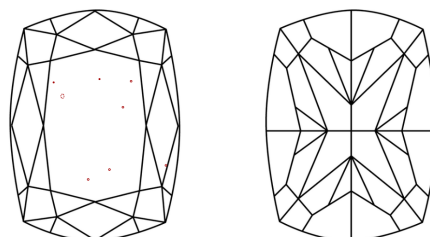
Comments: This Laboratory Grown Diamond was created by Chemical Vapor Deposition (CVD) growth process.

**PROPORTIONS**



Sample Image Used

**CLARITY CHARACTERISTICS**



**KEY TO SYMBOLS**

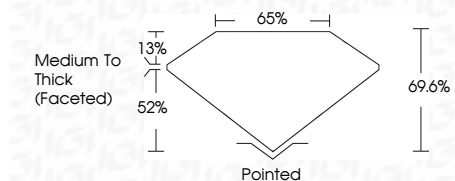
Red symbols indicate internal characteristics.  
Green symbols indicate external characteristics.

**COLOR**

D E F G H I J Faint Very Light Light

**CLARITY**

FL	IF	VS <sup>1-2</sup>	VS <sup>1-2</sup>	SI <sup>1-2</sup>	I <sup>1-3</sup>
Flawless	Internally Flawless	Very Very Slightly Included	Very Slightly Included	Slightly Included	Included



**ADDITIONAL GRADING INFORMATION**

Polish **EXCELLENT**  
Symmetry **EXCELLENT**  
Fluorescence **NONE**  
Inscription(s) **IGI LG809691654**  
Comments: This Laboratory Grown Diamond was created by Chemical Vapor Deposition (CVD) growth process.



June 17, 2026  
IGI Report No LG809691654  
**CUSHION MODIFIED BRILLIANT**  
9.63 X 7.76 X 5.40 MM  
3.62 CARATS  
FANCY VIVID YELLOW  
VS 2  
69.6%  
52%  
Medium To Thick (Faceted)  
Pointed  
EXCELLENT  
EXCELLENT  
NONE  
IGI LG809691654  
Comments: This Laboratory Grown Diamond was created by Chemical Vapor Deposition (CVD) growth process.