



ELECTRONIC COPY

LG809690884
Report verification at igi.org



June 17, 2026
IGI Report Number **LG809690884**
Description **LABORATORY GROWN DIAMOND**
Shape and Cutting Style **MARQUISE MODIFIED BRILLIANT**
Measurements **10.90 X 5.51 X 3.63 MM**
GRADING RESULTS
Carat Weight **1.50 CARAT**
Color Grade **FANCY INTENSE YELLOW**
Clarity Grade **VVS 2**

LABORATORY GROWN DIAMOND REPORT

June 17, 2026
IGI Report Number **LG809690884**
Description **LABORATORY GROWN DIAMOND**
Shape and Cutting Style **MARQUISE MODIFIED BRILLIANT**
Measurements **10.90 X 5.51 X 3.63 MM**

GRADING RESULTS

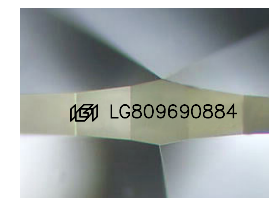
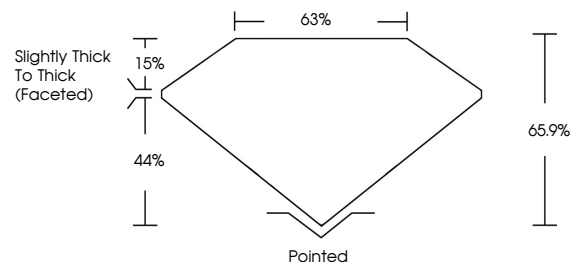
Carat Weight **1.50 CARAT**
Color Grade **FANCY INTENSE YELLOW**
Clarity Grade **VVS 2**

ADDITIONAL GRADING INFORMATION

Polish **EXCELLENT**
Symmetry **EXCELLENT**
Fluorescence **VERY SLIGHT**
Inscription(s) **LG809690884**

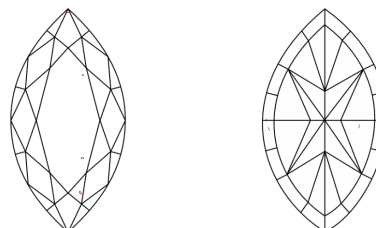
Comments: This Laboratory Grown Diamond was created by Chemical Vapor Deposition (CVD) growth process.
Indications of post-growth treatment.

PROPORTIONS



Sample Image Used

CLARITY CHARACTERISTICS



KEY TO SYMBOLS

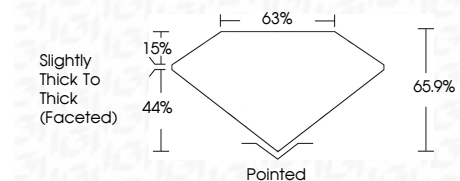
Red symbols indicate internal characteristics.
Green symbols indicate external characteristics.

COLOR

D E F G H I J Faint Very Light Light

CLARITY

FL	IF	VVS ¹⁻²	VS ¹⁻²	SI ¹⁻²	I ¹⁻³
Flawless	Internally Flawless	Very Very Slightly Included	Very Slightly Included	Slightly Included	Included



ADDITIONAL GRADING INFORMATION

Polish **EXCELLENT**
Symmetry **EXCELLENT**
Fluorescence **VERY SLIGHT**
Inscription(s) **LG809690884**
Comments: This Laboratory Grown Diamond was created by Chemical Vapor Deposition (CVD) growth process.
Indications of post-growth treatment.



June 17, 2026
IGI Report No **LG809690884**
MARQUISE MODIFIED BRILLIANT
1.50 CARAT
Carat Weight **1.50 CARAT**
Color Grade **FANCY INTENSE YELLOW**
Clarity Grade **VVS 2**
Depth **44%**
Table **15%**
Girdle **65.9%**
Slightly Thick To Thick (Faceted)
Culet **Pointed**
Polish **EXCELLENT**
Symmetry **EXCELLENT**
Fluorescence **VERY SLIGHT**
Inscription(s) **LG809690884**
Comments: This Laboratory Grown Diamond was created by Chemical Vapor Deposition (CVD) growth process.
Indications of post-growth treatment.