



ELECTRONIC COPY

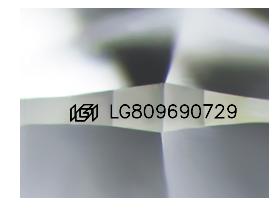
LG809690729
Report verification at igi.org



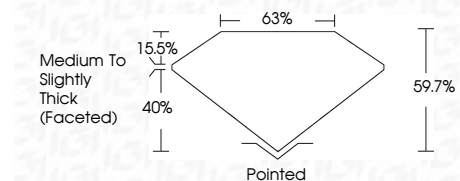
June 13, 2026
IGI Report Number **LG809690729**
Description **LABORATORY GROWN DIAMOND**
Shape and Cutting Style **ROUND MODIFIED BRILLIANT**
Measurements **8.98 - 8.99 X 5.37 MM**

GRADING RESULTS

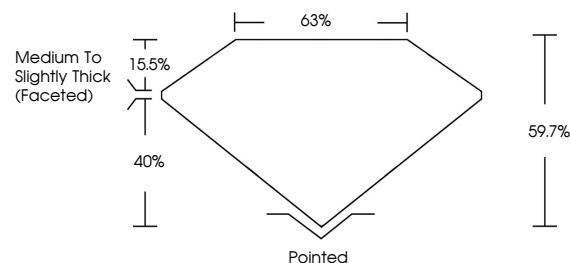
Carat Weight **3.04 CARATS**
Color Grade **F**
Clarity Grade **VVS 2**



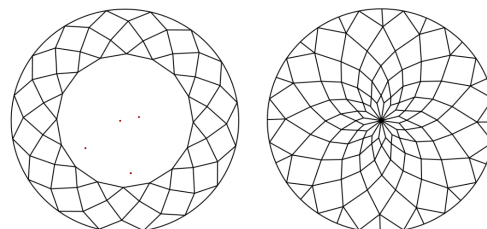
Sample Image Used



PROPORTIONS



CLARITY CHARACTERISTICS



KEY TO SYMBOLS

Red symbols indicate internal characteristics.
Green symbols indicate external characteristics.

COLOR

D E F G H I J Faint Very Light Light

CLARITY

FL	IF	VVS ¹⁻²	VS ¹⁻²	SI ¹⁻²	I ¹⁻³
Flawless	Internally Flawless	Very Very Slightly Included	Very Slightly Included	Slightly Included	Included

ADDITIONAL GRADING INFORMATION

Polish **EXCELLENT**
Symmetry **EXCELLENT**
Fluorescence **NONE**
Inscription(s) **IGI LG809690729**
Comments: This Laboratory Grown Diamond was created by Chemical Vapor Deposition (CVD) growth process. Type IIa



June 13, 2026
IGI Report No. **LG809690729**
ROUND MODIFIED BRILLIANT
8.98 - 8.99 X 5.37 MM
Carat Weight **3.04 CARATS**
Color Grade **F**
Clarity Grade **VVS 2**
Depth **59.7%**
Table **15.5%**
Girdle **Medium to Slightly Thick (Faceted)**
Culet **Pointed**
Polish **EXCELLENT**
Symmetry **EXCELLENT**
Fluorescence **NONE**
Inscription(s) **IGI LG809690729**
Comments: This Laboratory Grown Diamond was created by Chemical Vapor Deposition (CVD) growth process. Type IIa