



**ELECTRONIC COPY**

LG809690227  
Report verification at igi.org



June 12, 2026

IGI Report Number **LG809690227**

Description **LABORATORY GROWN DIAMOND**

Shape and Cutting Style **CUT CORNERED  
RECTANGULAR MODIFIED  
BRILLIANT**

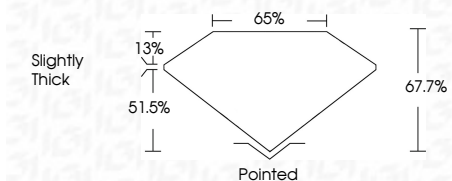
Measurements **8.16 X 5.70 X 3.86 MM**

**GRADING RESULTS**

Carat Weight **1.54 CARAT**

Color Grade **E**

Clarity Grade **VVS 2**



**ADDITIONAL GRADING INFORMATION**

Polish **EXCELLENT**

Symmetry **EXCELLENT**

Fluorescence **NONE**

Inscription(s) **IGI LG809690227**

Comments: This Laboratory Grown Diamond was created by Chemical Vapor Deposition (CVD) growth process. Type IIa



**IGI**

June 12, 2026  
IGI Report Number **LG809690227**  
Description **LABORATORY GROWN DIAMOND**  
Shape and Cutting Style **CUT CORNERED RECTANGULAR  
MODIFIED BRILLIANT**  
Measurements **8.16 X 5.70 X 3.86 MM**

**GRADING RESULTS**

Carat Weight **1.54 CARAT**

Color Grade **E**

Clarity Grade **VVS 2**

**ADDITIONAL GRADING INFORMATION**

Polish **EXCELLENT**

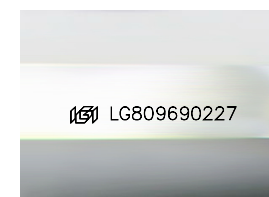
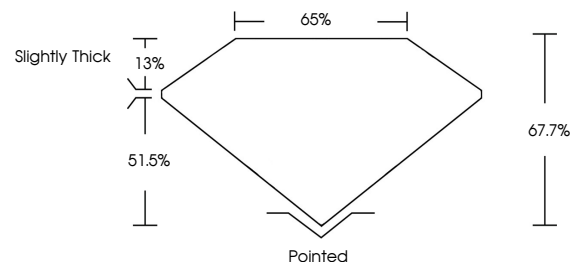
Symmetry **EXCELLENT**

Fluorescence **NONE**

Inscription(s) **IGI LG809690227**

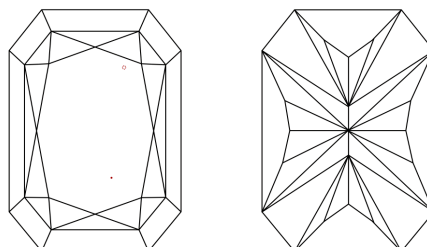
Comments: This Laboratory Grown Diamond was created by Chemical Vapor Deposition (CVD) growth process. Type IIa

**PROPORTIONS**



Sample Image Used

**CLARITY CHARACTERISTICS**



**KEY TO SYMBOLS**

Red symbols indicate internal characteristics.  
Green symbols indicate external characteristics.

**COLOR**

D E F G H I J Faint Very Light Light

**CLARITY**

FL	IF	VVS <sup>1-2</sup>	VS <sup>1-2</sup>	SI <sup>1-2</sup>	I <sup>1-3</sup>
Flawless	Internally Flawless	Very Very Slightly Included	Very Slightly Included	Slightly Included	Included



June 12, 2026  
IGI Report No. **LG809690227**  
**CUT CORNERED RECT. MODIFIED BRILLIANT**  
**8.16 X 5.70 X 3.86 MM**  
Carat Weight **1.54 CARAT**  
Color Grade **E**  
Clarity Grade **VVS 2**  
Depth **51.5%**  
Table **13%**  
Girdle **Slightly Thick**  
Culet **Pointed**  
Polish **EXCELLENT**  
Symmetry **EXCELLENT**  
Fluorescence **NONE**  
Inscription(s) **IGI LG809690227**

Comments: This Laboratory Grown Diamond was created by Chemical Vapor Deposition (CVD) growth process. Type IIa