



ELECTRONIC COPY

LG809686657 Report verification at igi.org



July 1, 2026 IGI Report Number LG809686657 Description LABORATORY GROWN DIAMOND Shape and Cutting Style ROUND BRILLIANT Measurements 6.43 - 6.48 X 3.97 MM GRADING RESULTS Carat Weight 1.02 CARAT Color Grade D Clarity Grade VVS 1 Cut Grade IDEAL

July 1, 2026 IGI Report Number LG809686657 Description LABORATORY GROWN DIAMOND Shape and Cutting Style ROUND BRILLIANT Measurements 6.43 - 6.48 X 3.97 MM

GRADING RESULTS

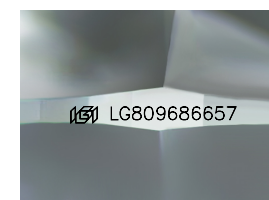
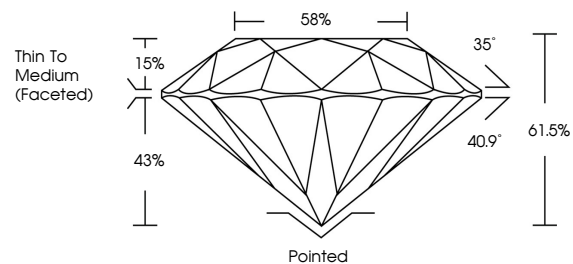
Carat Weight 1.02 CARAT Color Grade D Clarity Grade VVS 1 Cut Grade IDEAL

ADDITIONAL GRADING INFORMATION

Polish EXCELLENT Symmetry EXCELLENT Fluorescence NONE Inscription(s) IGI LG809686657

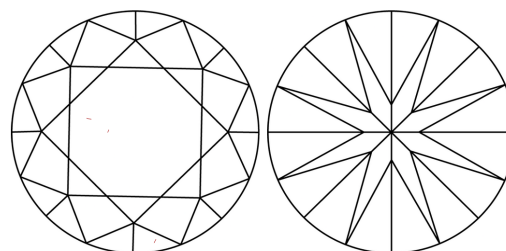
Comments: As Grown - No indication of post-growth treatment. This Laboratory Grown Diamond was created by High Pressure High Temperature (HPHT) growth process. Type II

PROPORTIONS



Sample Image Used

CLARITY CHARACTERISTICS



KEY TO SYMBOLS

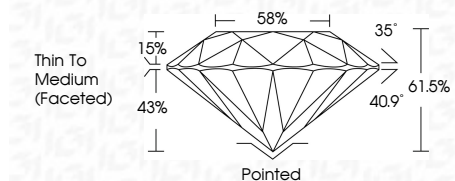
Red symbols indicate internal characteristics. Green symbols indicate external characteristics.

COLOR

D E F G H I J Faint Very Light Light

CLARITY

FL IF VVS 1-2 VS 1-2 SI 1-2 I 1-3 Flawless Internally Flawless Very Very Slightly Included Very Slightly Included Slightly Included Included



ADDITIONAL GRADING INFORMATION

Polish EXCELLENT Symmetry EXCELLENT Fluorescence NONE Inscription(s) IGI LG809686657 Comments: As Grown - No indication of post-growth treatment. This Laboratory Grown Diamond was created by High Pressure High Temperature (HPHT) growth process. Type II



July 1, 2026 IGI Report No LG809686657 ROUND BRILLIANT 6.43 - 6.48 X 3.97 MM 1.02 CARAT D VVS 1 IDEAL 61.5% 58% Thin To Medium (Faceted) Pointed EXCELLENT EXCELLENT NONE NONE IGI LG809686657 Comments: As Grown - No indication of post-growth treatment. This Laboratory Grown Diamond was created by High Pressure High Temperature (HPHT) growth process. Type II