



ELECTRONIC COPY

LG809685262 Report verification at igi.org



July 1, 2026 IGI Report Number LG809685262 Description LABORATORY GROWN DIAMOND Shape and Cutting Style ROUND BRILLIANT Measurements 12.60 - 12.68 X 7.87 MM GRADING RESULTS Carat Weight 7.93 CARATS Color Grade FANCY INTENSE PINK Clarity Grade VVS 2 Cut Grade IDEAL

July 1, 2026 IGI Report Number LG809685262 Description LABORATORY GROWN DIAMOND Shape and Cutting Style ROUND BRILLIANT Measurements 12.60 - 12.68 X 7.87 MM

GRADING RESULTS

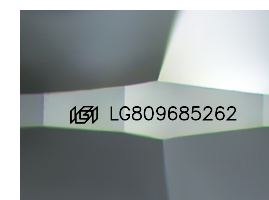
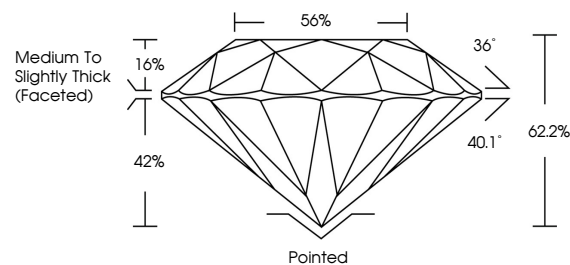
Carat Weight 7.93 CARATS Color Grade FANCY INTENSE PINK Clarity Grade VVS 2 Cut Grade IDEAL

ADDITIONAL GRADING INFORMATION

Polish EXCELLENT Symmetry EXCELLENT Fluorescence SLIGHT Inscription(s) IGI LG809685262

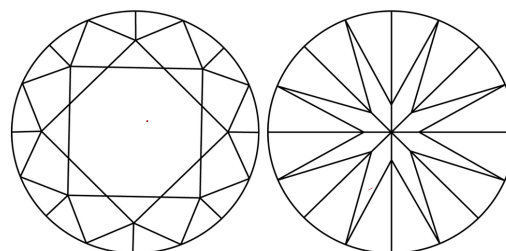
Comments: This Laboratory Grown Diamond was created by Chemical Vapor Deposition (CVD) growth process. Indications of post-growth treatment.

PROPORTIONS



Sample Image Used

CLARITY CHARACTERISTICS



KEY TO SYMBOLS

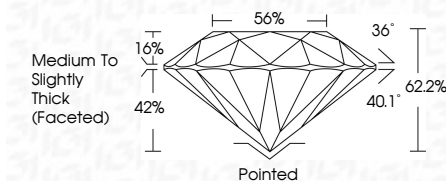
Red symbols indicate internal characteristics. Green symbols indicate external characteristics.

COLOR

D E F G H I J Faint Very Light Light

CLARITY

FL IF VVS 1-2 VS 1-2 SI 1-2 I 1-3 Flawless Internally Flawless Very Very Slightly Included Very Slightly Included Slightly Included Included



ADDITIONAL GRADING INFORMATION

Polish EXCELLENT Symmetry EXCELLENT Fluorescence SLIGHT Inscription(s) IGI LG809685262 Comments: This Laboratory Grown Diamond was created by Chemical Vapor Deposition (CVD) growth process. Indications of post-growth treatment.



IGI



July 1, 2026 IGI Report No LG809685262 ROUND BRILLIANT 12.60 - 12.68 X 7.87 MM 7.93 CARATS FANCY INTENSE PINK VVS 2 IDEAL 62.2% 56% Medium To Slightly Thick (Faceted) Pointed EXCELLENT EXCELLENT SLIGHT SLIGHT IGI LG809685262 Comments: This Laboratory Grown Diamond was created by Chemical Vapor Deposition (CVD) growth process. Indications of post-growth treatment.