



ELECTRONIC COPY

LG809684181
Report verification at igi.org



June 23, 2026
IGI Report Number **LG809684181**
Description **LABORATORY GROWN DIAMOND**
Shape and Cutting Style **SQUARE CUSHION MODIFIED BRILLIANT**
Measurements **6.29 X 6.00 X 3.98 MM**
GRADING RESULTS
Carat Weight **1.52 CARAT**
Color Grade **FANCY VIVID GREEN**
Clarity Grade **VVS 1**

LABORATORY GROWN DIAMOND REPORT

June 23, 2026
IGI Report Number **LG809684181**
Description **LABORATORY GROWN DIAMOND**
Shape and Cutting Style **SQUARE CUSHION MODIFIED BRILLIANT**
Measurements **6.29 X 6.00 X 3.98 MM**

GRADING RESULTS

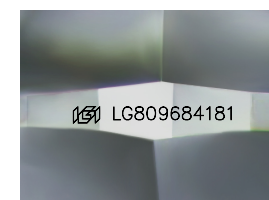
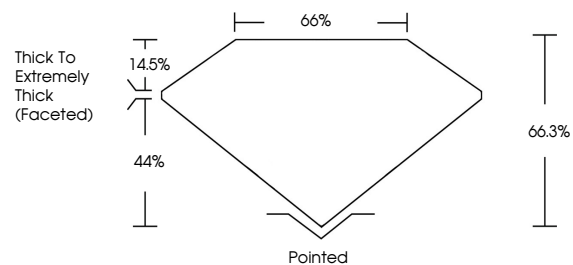
Carat Weight **1.52 CARAT**
Color Grade **FANCY VIVID GREEN**
Clarity Grade **VVS 1**

ADDITIONAL GRADING INFORMATION

Polish **EXCELLENT**
Symmetry **EXCELLENT**
Fluorescence **NONE**
Inscription(s) **IGI LG809684181**

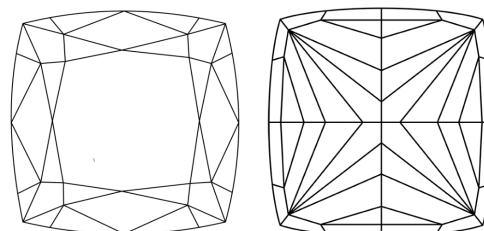
Comments: This Laboratory Grown Diamond was created by Chemical Vapor Deposition (CVD) growth process.
Indications of post-growth treatment.

PROPORTIONS



Sample Image Used

CLARITY CHARACTERISTICS



KEY TO SYMBOLS

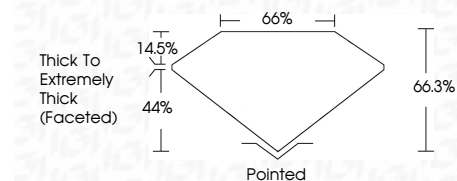
Red symbols indicate internal characteristics.
Green symbols indicate external characteristics.

COLOR

D E F G H I J Faint Very Light Light

CLARITY

FL	IF	VVS ¹⁻²	VS ¹⁻²	SI ¹⁻²	I ¹⁻³
Flawless	Internally Flawless	Very Very Slightly Included	Very Slightly Included	Slightly Included	Included



ADDITIONAL GRADING INFORMATION

Polish **EXCELLENT**
Symmetry **EXCELLENT**
Fluorescence **NONE**
Inscription(s) **IGI LG809684181**
Comments: This Laboratory Grown Diamond was created by Chemical Vapor Deposition (CVD) growth process.
Indications of post-growth treatment.



June 23, 2026
IGI Report No. LG809684181
SQUARE CUSHION MODIFIED BRILLIANT
6.29 X 6.00 X 3.98 MM
1.52 CARAT
FANCY VIVID GREEN
VVS 1
66.3%
44%
14.5%
Thick To Extremely Thick (Faceted)
Pointed
EXCELLENT
EXCELLENT
NONE
IGI LG809684181
Comments: This Laboratory Grown Diamond was created by Chemical Vapor Deposition (CVD) growth process.
Indications of post-growth treatment.