



**INTERNATIONAL
GEMOLOGICAL
INSTITUTE**

LABORATORY GROWN DIAMOND REPORT

June 15, 2026
 IGI Report Number **LG809683235**
 Description **LABORATORY GROWN DIAMOND**
 Shape and Cutting Style **ROUND BRILLIANT**
 Measurements **5.41 - 5.46 X 3.30 MM**

GRADING RESULTS

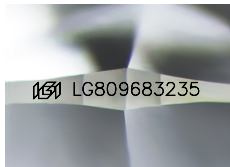
Carat Weight **0.60 CARAT**
 Color Grade **FANCY YELLOW**
 Clarity Grade **VVS 1**
 Cut Grade **IDEAL**

ADDITIONAL GRADING INFORMATION

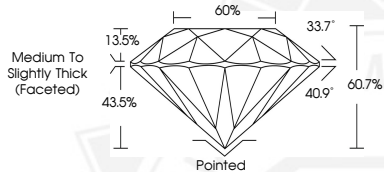
Polish **EXCELLENT**
 Symmetry **EXCELLENT**
 Fluorescence **NONE**
 Inscription(s) **IGI LG809683235**

Comments: As Grown - No indication of post-growth treatment. This Laboratory Grown Diamond was created by High Pressure High Temperature (HPHT) growth process.

ELECTRONIC COPY



Sample Image Used



June 15, 2026
 IGI Report Number **LG809683235**
 ROUND BRILLIANT
 LABORATORY GROWN DIAMOND
 5.41 - 5.46 X 3.30 MM
 Carat Weight **0.60 CARAT**
 Color Grade **FANCY YELLOW**
 Clarity Grade **VVS 1**
 Cut Grade **IDEAL**
 Polish **EXCELLENT**
 Symmetry **EXCELLENT**
 Fluorescence **NONE**
 Inscription(s) **IGI LG809683235**

Comments: As Grown - No indication of post-growth treatment. This Laboratory Grown Diamond was created by High Pressure High Temperature (HPHT) growth process.



June 15, 2026
 IGI Report Number **LG809683235**
 ROUND BRILLIANT
 LABORATORY GROWN DIAMOND
 5.41 - 5.46 X 3.30 MM
 Carat Weight **0.60 CARAT**
 Color Grade **FANCY YELLOW**
 Clarity Grade **VVS 1**
 Cut Grade **IDEAL**
 Polish **EXCELLENT**
 Symmetry **EXCELLENT**
 Fluorescence **NONE**
 Inscription(s) **IGI LG809683235**

Comments: As Grown - No indication of post-growth treatment. This Laboratory Grown Diamond was created by High Pressure High Temperature (HPHT) growth process.



THIS DOCUMENT WAS PRODUCED WITH THE FOLLOWING SECURITY MEASURES: SPECIAL DOCUMENT PAPER, INK SCREENS, WATERMARK, BACKGROUND DESIGNS, HOLOGRAM AND OTHER SECURITY FEATURES NOT LISTED AND DO EXCEED DOCUMENT SECURITY INDUSTRY GUIDELINES.

For terms & conditions and to verify this report, please visit www.igi.org