



ELECTRONIC COPY

LG809682289
Report verification at igi.org



June 15, 2026
IGI Report Number **LG809682289**
Description **LABORATORY GROWN DIAMOND**
Shape and Cutting Style **CUSHION BRILLIANT**
Measurements **12.11 X 8.58 X 6.01 MM**
GRADING RESULTS
Carat Weight **5.05 CARATS**
Color Grade **LIGHT YELLOW**
Clarity Grade **VVS 2**

June 15, 2026
IGI Report Number **LG809682289**
Description **LABORATORY GROWN DIAMOND**
Shape and Cutting Style **CUSHION BRILLIANT**
Measurements **12.11 X 8.58 X 6.01 MM**

GRADING RESULTS

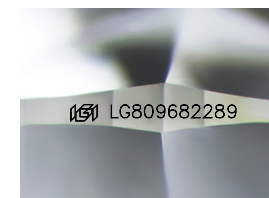
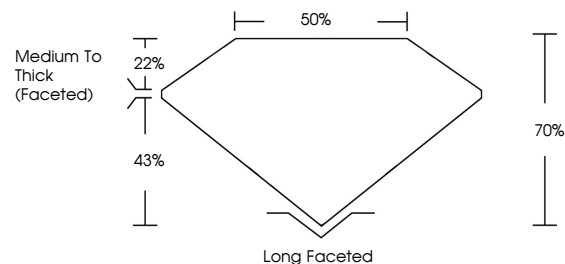
Carat Weight **5.05 CARATS**
Color Grade **LIGHT YELLOW**
Clarity Grade **VVS 2**

ADDITIONAL GRADING INFORMATION

Polish **EXCELLENT**
Symmetry **EXCELLENT**
Fluorescence **NONE**
Inscription(s) **IGI LG809682289**

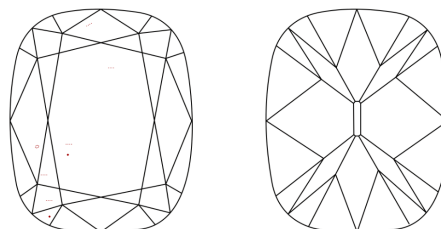
Comments: This Laboratory Grown Diamond was created by Chemical Vapor Deposition (CVD) growth process.
Type IIa

PROPORTIONS



Sample Image Used

CLARITY CHARACTERISTICS



KEY TO SYMBOLS

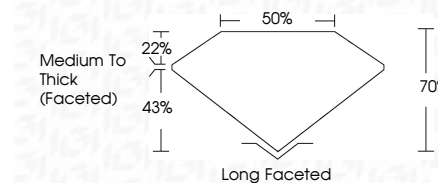
Red symbols indicate internal characteristics.
Green symbols indicate external characteristics.

COLOR

D E F G H I J Faint Very Light Light

CLARITY

FL	IF	VVS ¹⁻²	VS ¹⁻²	SI ¹⁻²	I ¹⁻³
Flawless	Internally Flawless	Very Very Slightly Included	Very Slightly Included	Slightly Included	Included



ADDITIONAL GRADING INFORMATION

Polish **EXCELLENT**
Symmetry **EXCELLENT**
Fluorescence **NONE**
Inscription(s) **IGI LG809682289**
Comments: This Laboratory Grown Diamond was created by Chemical Vapor Deposition (CVD) growth process.
Type IIa



IGI



June 15, 2026
IGI Report No. LG809682289
CUSHION BRILLIANT
5.05 CARATS
LIGHT YELLOW
VVS 2
12.11 X 8.58 X 6.01 MM
Carat Weight
Color Grade
Clarity Grade
Table
Depth
Girdle
Medium To Thick (Faceted)
Culet
Long Faceted
Polish
Symmetry
Fluorescence
Inscription(s)
EXCELLENT
EXCELLENT
NONE
IGI LG809682289

Comments: This Laboratory Grown Diamond was created by Chemical Vapor Deposition (CVD) growth process.
Type IIa