



ELECTRONIC COPY

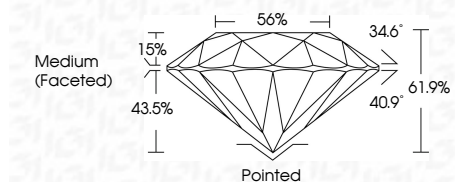
LG809680107 Report verification at igi.org



June 15, 2026 IGI Report Number LG809680107 Description LABORATORY GROWN DIAMOND Shape and Cutting Style ROUND BRILLIANT Measurements 8.16 - 8.20 X 5.07 MM

GRADING RESULTS

Carat Weight 2.06 CARATS Color Grade D Clarity Grade VVS 2 Cut Grade IDEAL



ADDITIONAL GRADING INFORMATION

Polish EXCELLENT Symmetry EXCELLENT Fluorescence NONE Inscription(s) IGI LG809680107 Comments: This Laboratory Grown Diamond was created by Chemical Vapor Deposition (CVD) growth process. Type IIa



Table with 2 columns: Property and Value. Includes Carat Weight (2.06 CARATS), Color Grade (D), Clarity Grade (VVS 2), Cut Grade (IDEAL), Depth (61.9%), Table (56%), Girdle (Medium (Faceted)), and other grading details.

June 15, 2026 IGI Report No LG809680107 ROUND BRILLIANT 8.16 - 8.20 X 5.07 MM 2.06 CARATS D VVS 2 IDEAL 61.9% 56% Medium (Faceted) Pointed EXCELLENT EXCELLENT NONE IGI LG809680107 Comments: This Laboratory Grown Diamond was created by Chemical Vapor Deposition (CVD) growth process. Type IIa

June 15, 2026 IGI Report Number LG809680107 Description LABORATORY GROWN DIAMOND Shape and Cutting Style ROUND BRILLIANT Measurements 8.16 - 8.20 X 5.07 MM

GRADING RESULTS

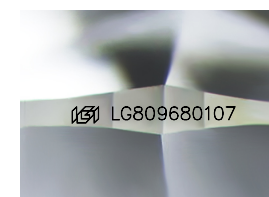
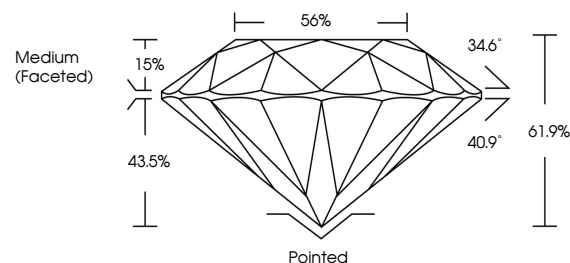
Carat Weight 2.06 CARATS Color Grade D Clarity Grade VVS 2 Cut Grade IDEAL

ADDITIONAL GRADING INFORMATION

Polish EXCELLENT Symmetry EXCELLENT Fluorescence NONE Inscription(s) IGI LG809680107

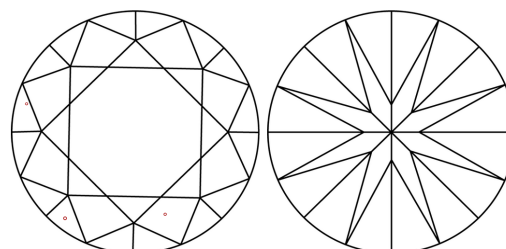
Comments: This Laboratory Grown Diamond was created by Chemical Vapor Deposition (CVD) growth process. Type IIa

PROPORTIONS



Sample Image Used

CLARITY CHARACTERISTICS



KEY TO SYMBOLS

Red symbols indicate internal characteristics. Green symbols indicate external characteristics.

COLOR

D E F G H I J Faint Very Light Light

CLARITY

FL IF VVS 1-2 VS 1-2 SI 1-2 I 1-3 Flawless Internally Flawless Very Very Slightly Included Very Slightly Included Slightly Included Included

