



ELECTRONIC COPY

LG809679028
Report verification at igi.org



June 16, 2026
IGI Report Number: LG809679028
Description: LABORATORY GROWN DIAMOND
Shape and Cutting Style: ROUND BRILLIANT
Measurements: 6.54 - 6.59 X 4.14 MM
GRADING RESULTS
Carat Weight: 1.09 CARAT
Color Grade: E
Clarity Grade: VS 1
Cut Grade: EXCELLENT

June 16, 2026
IGI Report Number: LG809679028
Description: LABORATORY GROWN DIAMOND
Shape and Cutting Style: ROUND BRILLIANT
Measurements: 6.54 - 6.59 X 4.14 MM

GRADING RESULTS

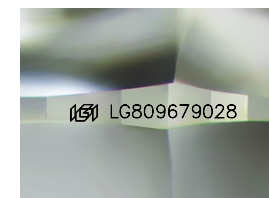
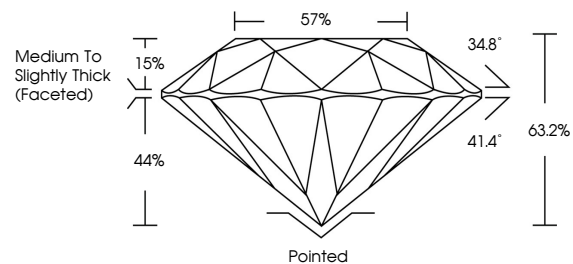
Carat Weight: 1.09 CARAT
Color Grade: E
Clarity Grade: VS 1
Cut Grade: EXCELLENT

ADDITIONAL GRADING INFORMATION

Polish: EXCELLENT
Symmetry: EXCELLENT
Fluorescence: NONE
Inscription(s): IGI LG809679028

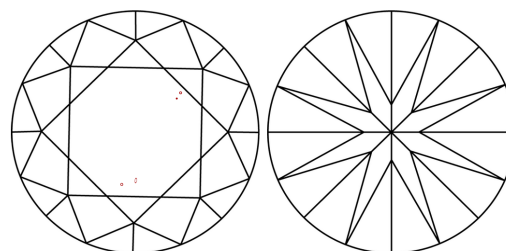
Comments: This Laboratory Grown Diamond was created by Chemical Vapor Deposition (CVD) growth process. Type IIa

PROPORTIONS



Sample Image Used

CLARITY CHARACTERISTICS



KEY TO SYMBOLS

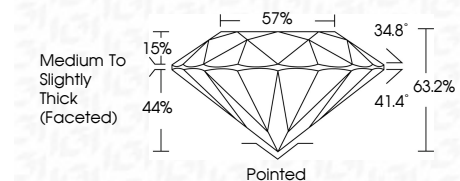
Red symbols indicate internal characteristics.
Green symbols indicate external characteristics.

COLOR

D E F G H I J Faint Very Light Light

CLARITY

Table with columns: FL, IF, VS 1-2, VS 1-2, SI 1-2, I 1-3 and corresponding descriptions: Flawless, Internally Flawless, Very Very Slightly Included, Very Slightly Included, Slightly Included, Included



ADDITIONAL GRADING INFORMATION

Polish: EXCELLENT
Symmetry: EXCELLENT
Fluorescence: NONE
Inscription(s): IGI LG809679028
Comments: This Laboratory Grown Diamond was created by Chemical Vapor Deposition (CVD) growth process. Type IIa



June 16, 2026
IGI Report No. LG809679028
ROUND BRILLIANT
6.54 - 6.59 X 4.14 MM
1.09 CARAT
Color Grade: E
Clarity Grade: VS 1
Depth: 63.2%
Table: 57%
Girdle: Medium To Slightly Thick (Faceted)
Culet: Pointed
Polish: EXCELLENT
Symmetry: EXCELLENT
Fluorescence: NONE
Inscription(s): IGI LG809679028
Comments: This Laboratory Grown Diamond was created by Chemical Vapor Deposition (CVD) growth process. Type IIa