



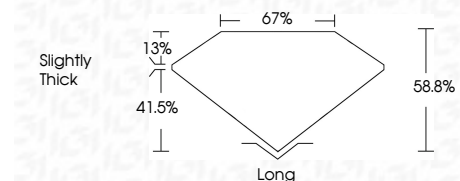
ELECTRONIC COPY

LG809678574
Report verification at igi.org



June 19, 2026
IGI Report Number **LG809678574**
Description **LABORATORY GROWN DIAMOND**
Shape and Cutting Style **HEXAGONAL MIXED CUT**
Measurements **12.58 X 7.24 X 4.26 MM**

GRADING RESULTS
Carat Weight **3.01 CARATS**
Color Grade **E**
Clarity Grade **VS 2**



ADDITIONAL GRADING INFORMATION
Polish **EXCELLENT**
Symmetry **EXCELLENT**
Fluorescence **NONE**
Inscription(s) **IGI LG809678574**
Comments: This Laboratory Grown Diamond was created by Chemical Vapor Deposition (CVD) growth process. Type IIa



June 19, 2026
IGI Report No LG809678574
HEXAGONAL MIXED CUT
12.58 X 7.24 X 4.26 MM
3.01 CARATS
E
VS 2
68.6%
67%
Slightly Thick
Long
EXCELLENT
EXCELLENT
NONE
IGI LG809678574
Comments: This Laboratory Grown Diamond was created by Chemical Vapor Deposition (CVD) growth process. Type IIa

LABORATORY GROWN DIAMOND REPORT

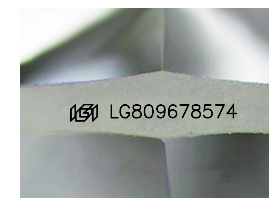
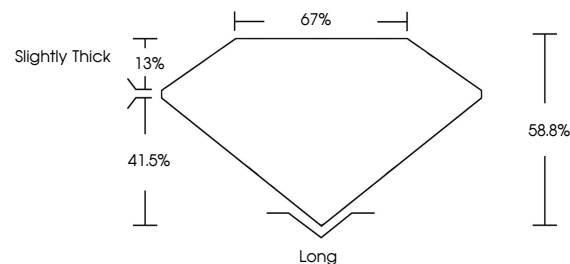
June 19, 2026
IGI Report Number **LG809678574**
Description **LABORATORY GROWN DIAMOND**
Shape and Cutting Style **HEXAGONAL MIXED CUT**
Measurements **12.58 X 7.24 X 4.26 MM**

GRADING RESULTS
Carat Weight **3.01 CARATS**
Color Grade **E**
Clarity Grade **VS 2**

ADDITIONAL GRADING INFORMATION
Polish **EXCELLENT**
Symmetry **EXCELLENT**
Fluorescence **NONE**
Inscription(s) **IGI LG809678574**

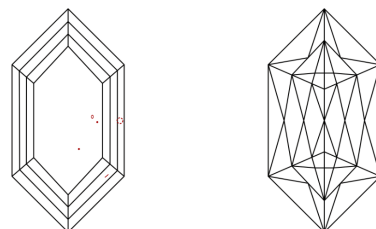
Comments: This Laboratory Grown Diamond was created by Chemical Vapor Deposition (CVD) growth process. Type IIa

PROPORTIONS



Sample Image Used

CLARITY CHARACTERISTICS



KEY TO SYMBOLS

Red symbols indicate internal characteristics.
Green symbols indicate external characteristics.

COLOR

D E F G H I J Faint Very Light Light

CLARITY

FL	IF	VS ¹⁻²	VS ¹⁻²	SI ¹⁻²	I ¹⁻³
Flawless	Internally Flawless	Very Very Slightly Included	Very Slightly Included	Slightly Included	Included

