



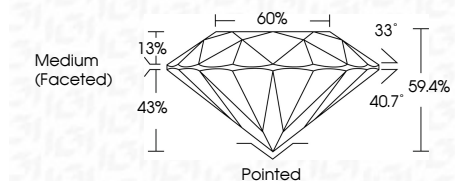
ELECTRONIC COPY

LG809675431 Report verification at igi.org



June 13, 2026 IGI Report Number LG809675431 Description LABORATORY GROWN DIAMOND Shape and Cutting Style ROUND BRILLIANT Measurements 6.52 - 6.62 X 3.89 MM

GRADING RESULTS Carat Weight 1.02 CARAT Color Grade F Clarity Grade VVS 2 Cut Grade IDEAL



ADDITIONAL GRADING INFORMATION Polish EXCELLENT Symmetry EXCELLENT Fluorescence NONE Inscription(s) IGI LG809675431 Comments: This Laboratory Grown Diamond was created by Chemical Vapor Deposition (CVD) growth process. Type IIa



June 13, 2026 IGI Report No. LG809675431 ROUND BRILLIANT 6.52 - 6.62 X 3.89 MM 1.02 CARAT F VVS 2 IDEAL 59.4% 60% Medium (Faceted) Pointed EXCELLENT EXCELLENT NONE IGI LG809675431 Comments: This Laboratory Grown Diamond was created by Chemical Vapor Deposition (CVD) growth process. Type IIa

LABORATORY GROWN DIAMOND REPORT

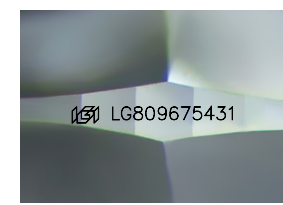
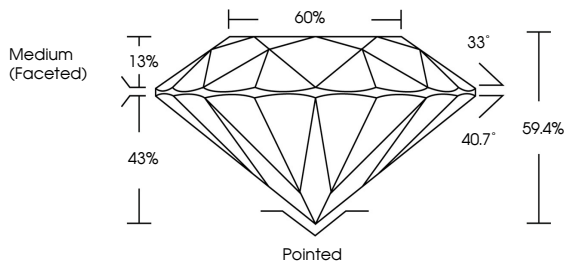
June 13, 2026 IGI Report Number LG809675431 Description LABORATORY GROWN DIAMOND Shape and Cutting Style ROUND BRILLIANT Measurements 6.52 - 6.62 X 3.89 MM

GRADING RESULTS Carat Weight 1.02 CARAT Color Grade F Clarity Grade VVS 2 Cut Grade IDEAL

ADDITIONAL GRADING INFORMATION Polish EXCELLENT Symmetry EXCELLENT Fluorescence NONE Inscription(s) IGI LG809675431

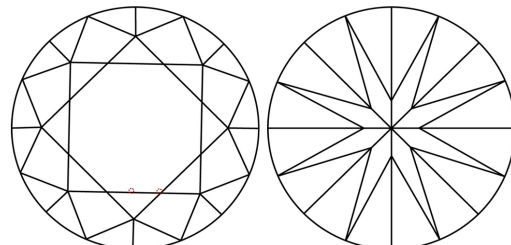
Comments: This Laboratory Grown Diamond was created by Chemical Vapor Deposition (CVD) growth process. Type IIa

PROPORTIONS



Sample Image Used

CLARITY CHARACTERISTICS



KEY TO SYMBOLS Red symbols indicate internal characteristics. Green symbols indicate external characteristics.

COLOR table with columns D, E, F, G, H, I, J, Faint, Very Light, Light

CLARITY table with columns FL, IF, VVS 1-2, VS 1-2, SI 1-2, I 1-3, Flawless, Internally Flawless, Very Very Slightly Included, Very Slightly Included, Slightly Included, Included

