



**ELECTRONIC COPY**

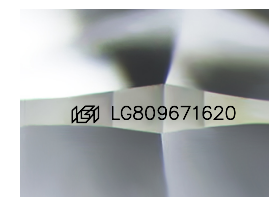
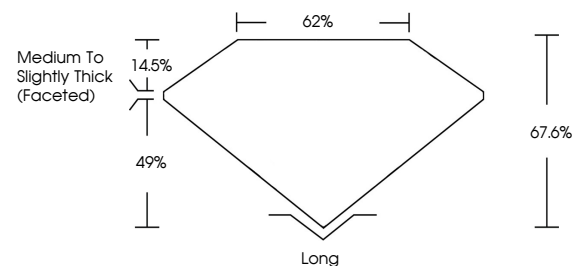
LG809671620  
Report verification at [igi.org](http://igi.org)



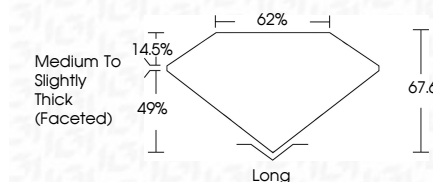
June 13, 2026  
IGI Report Number **LG809671620**  
Description **LABORATORY GROWN DIAMOND**  
Shape and Cutting Style **CUSHION MIXED CUT**  
Measurements **10.53 X 7.17 X 4.85 MM**  
**GRADING RESULTS**  
Carat Weight **3.51 CARATS**  
Color Grade **F**  
Clarity Grade **VVS 1**

June 13, 2026  
IGI Report Number **LG809671620**  
Description **LABORATORY GROWN DIAMOND**  
Shape and Cutting Style **CUSHION MIXED CUT**  
Measurements **10.53 X 7.17 X 4.85 MM**  
**GRADING RESULTS**  
Carat Weight **3.51 CARATS**  
Color Grade **F**  
Clarity Grade **VVS 1**

**PROPORTIONS**



Sample Image Used



**ADDITIONAL GRADING INFORMATION**

Polish **EXCELLENT**  
Symmetry **EXCELLENT**  
Fluorescence **NONE**  
Inscription(s) **IGI LG809671620**

Comments: This Laboratory Grown Diamond was created by Chemical Vapor Deposition (CVD) growth process.  
Type IIa

**ADDITIONAL GRADING INFORMATION**

Polish **EXCELLENT**  
Symmetry **EXCELLENT**  
Fluorescence **NONE**  
Inscription(s) **IGI LG809671620**  
Comments: This Laboratory Grown Diamond was created by Chemical Vapor Deposition (CVD) growth process.  
Type IIa

**COLOR**

D E F G H I J Faint Very Light Light

**CLARITY**

FL	IF	VS <sup>1-2</sup>	VS <sup>1-2</sup>	SI <sup>1-2</sup>	I <sup>1-3</sup>
Flawless	Internally Flawless	Very Very Slightly Included	Very Slightly Included	Slightly Included	Included



**IGI**



June 13, 2026  
IGI Report No **LG809671620**  
**CUSHION MIXED CUT**  
10.53 X 7.17 X 4.85 MM  
3.51 CARATS  
F  
3.51 CARATS  
VVS 1  
67.6%  
62%  
Medium to Slightly Thick (Faceted)  
Long  
EXCELLENT  
EXCELLENT  
NONE  
IGI LG809671620  
Comments: This Laboratory Grown Diamond was created by Chemical Vapor Deposition (CVD) growth process.  
Type IIa