



ELECTRONIC COPY

LABORATORY GROWN DIAMOND REPORT

June 13, 2026
IGI Report Number LG809671421
Description LABORATORY GROWN DIAMOND
Shape and Cutting Style CUT CORNERED RECTANGULAR MODIFIED BRILLIANT
Measurements 11.43 X 7.74 X 5.27 MM

GRADING RESULTS

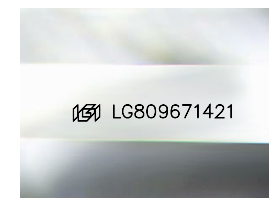
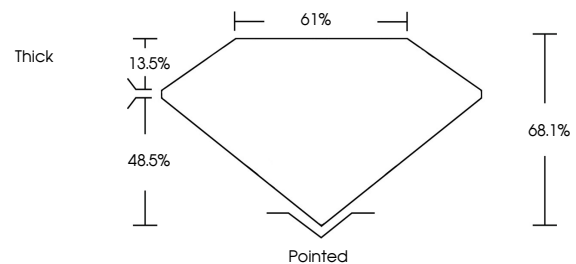
Carat Weight 4.04 CARATS
Color Grade F
Clarity Grade VVS 2

ADDITIONAL GRADING INFORMATION

Polish EXCELLENT
Symmetry EXCELLENT
Fluorescence NONE
Inscription(s) LG809671421

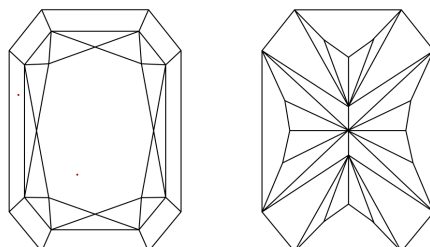
Comments: This Laboratory Grown Diamond was created by Chemical Vapor Deposition (CVD) growth process.
Type IIa

PROPORTIONS



Sample Image Used

CLARITY CHARACTERISTICS



KEY TO SYMBOLS

Red symbols indicate internal characteristics.
Green symbols indicate external characteristics.

COLOR

D E F G H I J Faint Very Light Light

CLARITY

FL IF VVS¹⁻² VS¹⁻² SI¹⁻² I¹⁻³
Flawless Internally Flawless Very Very Slightly Included Very Slightly Included Slightly Included Included



June 13, 2026
IGI Report Number LG809671421
Description LABORATORY GROWN DIAMOND
Shape and Cutting Style CUT CORNERED RECTANGULAR MODIFIED BRILLIANT
Measurements 11.43 X 7.74 X 5.27 MM
GRADING RESULTS
Carat Weight 4.04 CARATS
Color Grade F
Clarity Grade VVS 2



ADDITIONAL GRADING INFORMATION

Polish EXCELLENT
Symmetry EXCELLENT
Fluorescence NONE
Inscription(s) LG809671421
Comments: This Laboratory Grown Diamond was created by Chemical Vapor Deposition (CVD) growth process.
Type IIa



IGI



June 13, 2026
IGI Report No LG809671421
CUT CORNERED RECT. MODIFIED BRILLIANT
11.43 X 7.74 X 5.27 MM
4.04 CARATS
F
VVS 2
68.1%
61%
Thick
Pointed
EXCELLENT
EXCELLENT
NONE
 LG809671421

Comments: This Laboratory Grown Diamond was created by Chemical Vapor Deposition (CVD) growth process.
Type IIa