



ELECTRONIC COPY

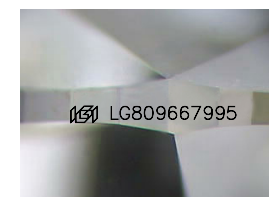
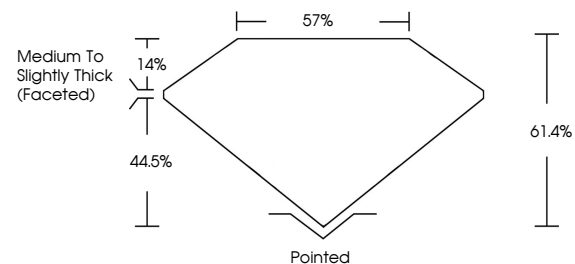
LG809667995
Report verification at igi.org



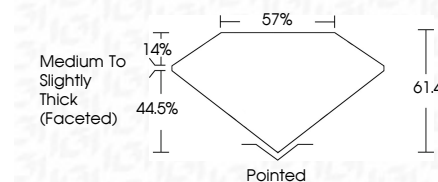
June 11, 2026
IGI Report Number **LG809667995**
Description **LABORATORY GROWN DIAMOND**
Shape and Cutting Style **OVAL BRILLIANT**
Measurements **10.19 X 7.09 X 4.35 MM**
GRADING RESULTS
Carat Weight **1.92 CARAT**
Color Grade **D**
Clarity Grade **VVS 2**

June 11, 2026
IGI Report Number **LG809667995**
Description **LABORATORY GROWN DIAMOND**
Shape and Cutting Style **OVAL BRILLIANT**
Measurements **10.19 X 7.09 X 4.35 MM**
GRADING RESULTS
Carat Weight **1.92 CARAT**
Color Grade **D**
Clarity Grade **VVS 2**

PROPORTIONS



Sample Image Used



ADDITIONAL GRADING INFORMATION

Polish **EXCELLENT**
Symmetry **EXCELLENT**
Fluorescence **NONE**
Inscription(s) **IGI LG809667995**

Comments: This Laboratory Grown Diamond was created by Chemical Vapor Deposition (CVD) growth process.
Type IIa

ADDITIONAL GRADING INFORMATION

Polish **EXCELLENT**
Symmetry **EXCELLENT**
Fluorescence **NONE**
Inscription(s) **IGI LG809667995**
Comments: This Laboratory Grown Diamond was created by Chemical Vapor Deposition (CVD) growth process.
Type IIa

COLOR

D E F G H I J Faint Very Light Light

CLARITY

FL	IF	VS ¹⁻²	VS ¹⁻²	SI ¹⁻²	I ¹⁻³
Flawless	Internally Flawless	Very Very Slightly Included	Very Slightly Included	Slightly Included	Included



IGI



June 11, 2026
IGI Report No. LG809667995
OVAL BRILLIANT
10.19 X 7.09 X 4.35 MM
1.92 CARAT
Color Grade D
Clarity Grade VVS 2
Table 61.4%
Girdle 44.5%
Medium to Slightly Thick (Faceted)
Culet Pointed
Polish EXCELLENT
Symmetry EXCELLENT
Fluorescence NONE
Inscription(s) IGI LG809667995
Comments: This Laboratory Grown Diamond was created by Chemical Vapor Deposition (CVD) growth process.
Type IIa