



ELECTRONIC COPY

LG809664640 Report verification at igi.org



June 11, 2026 IGI Report Number LG809664640 Description LABORATORY GROWN DIAMOND Shape and Cutting Style CUT CORNERED RECTANGULAR MODIFIED BRILLIANT Measurements 6.98 X 5.09 X 3.51 MM GRADING RESULTS Carat Weight 1.06 CARAT Color Grade D Clarity Grade VVS 2

June 11, 2026 IGI Report Number LG809664640 Description LABORATORY GROWN DIAMOND Shape and Cutting Style CUT CORNERED RECTANGULAR MODIFIED BRILLIANT Measurements 6.98 X 5.09 X 3.51 MM

GRADING RESULTS

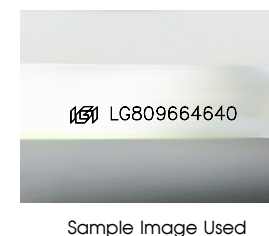
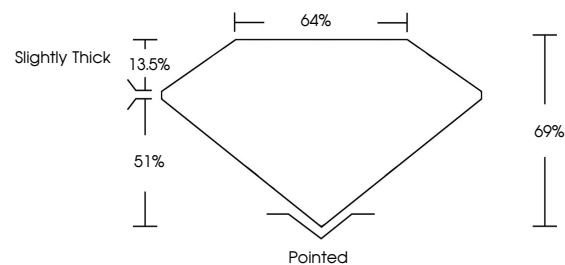
Carat Weight 1.06 CARAT Color Grade D Clarity Grade VVS 2

ADDITIONAL GRADING INFORMATION

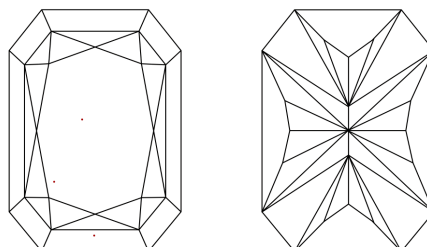
Polish EXCELLENT Symmetry EXCELLENT Fluorescence NONE Inscription(s) IGI LG809664640

Comments: This Laboratory Grown Diamond was created by Chemical Vapor Deposition (CVD) growth process. Type IIa

PROPORTIONS



CLARITY CHARACTERISTICS



KEY TO SYMBOLS

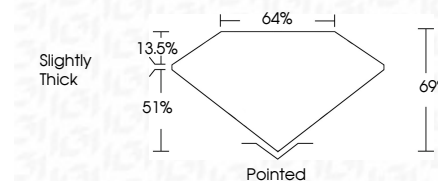
Red symbols indicate internal characteristics. Green symbols indicate external characteristics.

COLOR

D E F G H I J Faint Very Light Light

CLARITY

FL IF VVS 1-2 VS 1-2 SI 1-2 I 1-3 Flawless Internally Flawless Very Very Slightly Included Very Slightly Included Slightly Included Included



ADDITIONAL GRADING INFORMATION

Polish EXCELLENT Symmetry EXCELLENT Fluorescence NONE Inscription(s) IGI LG809664640 Comments: This Laboratory Grown Diamond was created by Chemical Vapor Deposition (CVD) growth process. Type IIa



June 11, 2026 IGI Report No. LG809664640 CUT CORNERED RECT. MODIFIED BRILLIANT 6.98 X 5.09 X 3.51 MM 1.06 CARAT D VVS 2 69% 64% Slightly Thick Pointed EXCELLENT EXCELLENT NONE NONE IGI LG809664640 Comments: This Laboratory Grown Diamond was created by Chemical Vapor Deposition (CVD) growth process. Type IIa