



**ELECTRONIC COPY**

LG809660147  
Report verification at [igi.org](http://igi.org)



June 15, 2026

IGI Report Number **LG809660147**

Description **LABORATORY GROWN DIAMOND**

Shape and Cutting Style **ROUND MODIFIED BRILLIANT**

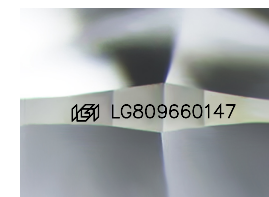
Measurements **10.83 - 10.82 X 6.57 MM**

**GRADING RESULTS**

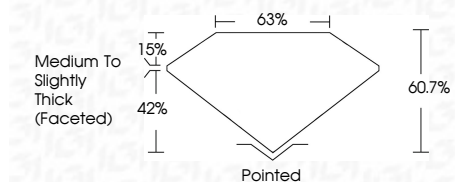
Carat Weight **5.19 CARATS**

Color Grade **FANCY INTENSE PINK**

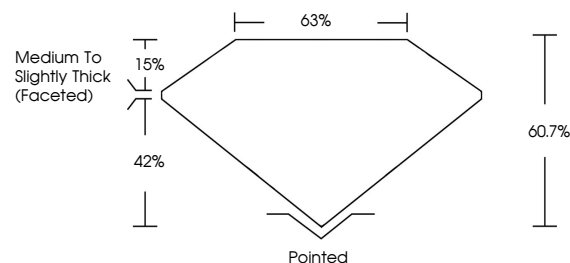
Clarity Grade **VS 1**



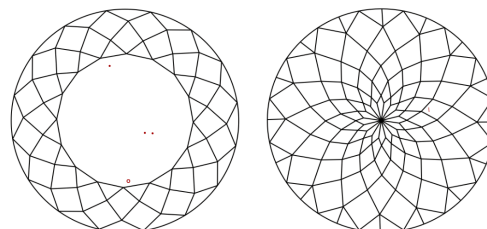
Sample Image Used



**PROPORTIONS**



**CLARITY CHARACTERISTICS**



**KEY TO SYMBOLS**

Red symbols indicate internal characteristics.  
Green symbols indicate external characteristics.

**COLOR**

D E F G H I J Faint Very Light Light

**CLARITY**

FL	IF	VS <sup>1-2</sup>	VS <sup>1-2</sup>	SI <sup>1-2</sup>	I <sup>1-3</sup>
Flawless	Internally Flawless	Very Very Slightly Included	Very Slightly Included	Slightly Included	Included

**ADDITIONAL GRADING INFORMATION**

Polish **EXCELLENT**

Symmetry **EXCELLENT**

Fluorescence **SLIGHT**

Inscription(s) **IGI LG809660147**

Comments: This Laboratory Grown Diamond was created by Chemical Vapor Deposition (CVD) growth process. Indications of post-growth treatment.



June 15, 2026  
IGI Report No LG809660147  
**ROUND MODIFIED BRILLIANT**

5.19 CARATS  
FANCY INTENSE PINK  
VS 1  
10.83 - 10.82 X 6.57 MM  
Medium to Slightly Thick (Faceted)

63%  
60.7%  
42%  
15%Pointed  
EXCELLENT  
EXCELLENT  
SLIGHT  
IGI LG809660147

Comments: This Laboratory Grown Diamond was created by Chemical Vapor Deposition (CVD) growth process. Indications of post-growth treatment.