



ELECTRONIC COPY

LG809660103
Report verification at igi.org



June 19, 2026
IGI Report Number **LG809660103**
Description **LABORATORY GROWN DIAMOND**
Shape and Cutting Style **CUSHION MIXED CUT**
Measurements **9.24 X 6.21 X 4.34 MM**
GRADING RESULTS
Carat Weight **2.42 CARATS**
Color Grade **FANCY INTENSE PINK**
Clarity Grade **VVS 1**

June 19, 2026
IGI Report Number **LG809660103**
Description **LABORATORY GROWN DIAMOND**
Shape and Cutting Style **CUSHION MIXED CUT**
Measurements **9.24 X 6.21 X 4.34 MM**

GRADING RESULTS

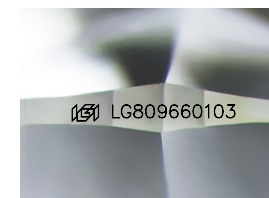
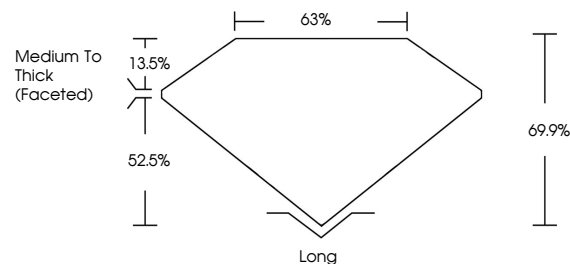
Carat Weight **2.42 CARATS**
Color Grade **FANCY INTENSE PINK**
Clarity Grade **VVS 1**

ADDITIONAL GRADING INFORMATION

Polish **EXCELLENT**
Symmetry **EXCELLENT**
Fluorescence **SLIGHT**
Inscription(s) **LG809660103**

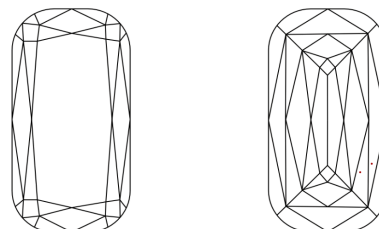
Comments: This Laboratory Grown Diamond was created by Chemical Vapor Deposition (CVD) growth process.
Indications of post-growth treatment.

PROPORTIONS



Sample Image Used

CLARITY CHARACTERISTICS



KEY TO SYMBOLS

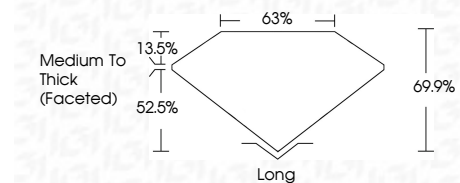
Red symbols indicate internal characteristics.
Green symbols indicate external characteristics.

COLOR

D E F G H I J Faint Very Light Light

CLARITY

FL	IF	VVS ¹⁻²	VS ¹⁻²	SI ¹⁻²	I ¹⁻³
Flawless	Internally Flawless	Very Very Slightly Included	Very Slightly Included	Slightly Included	Included



ADDITIONAL GRADING INFORMATION

Polish **EXCELLENT**
Symmetry **EXCELLENT**
Fluorescence **SLIGHT**
Inscription(s) **LG809660103**
Comments: This Laboratory Grown Diamond was created by Chemical Vapor Deposition (CVD) growth process.
Indications of post-growth treatment.



June 19, 2026
IGI Report No **LG809660103**
CUSHION MIXED CUT
2.42 CARATS
Carat Weight **FANCY INTENSE PINK**
Color Grade **VVS 1**
Depth **69.9%**
Table **63%**
Girdle **Medium To Thick (Faceted)**
Culet **Long**
Polish **EXCELLENT**
Symmetry **EXCELLENT**
Fluorescence **SLIGHT**
Inscription(s) **LG809660103**
Comments: This Laboratory Grown Diamond was created by Chemical Vapor Deposition (CVD) growth process.
Indications of post-growth treatment.