



ELECTRONIC COPY

LG809654936
Report verification at igi.org



June 12, 2026

IGI Report Number **LG809654936**

Description **LABORATORY GROWN DIAMOND**

Shape and Cutting Style **ROUND BRILLIANT**

Measurements **9.80 - 9.83 X 5.82 MM**

GRADING RESULTS

Carat Weight **3.51 CARATS**

Color Grade **F**

Clarity Grade **VS 1**

Cut Grade **IDEAL**

June 12, 2026
IGI Report Number **LG809654936**
Description **LABORATORY GROWN DIAMOND**
Shape and Cutting Style **ROUND BRILLIANT**
Measurements **9.80 - 9.83 X 5.82 MM**

GRADING RESULTS

Carat Weight **3.51 CARATS**

Color Grade **F**

Clarity Grade **VS 1**

Cut Grade **IDEAL**

ADDITIONAL GRADING INFORMATION

Polish **EXCELLENT**

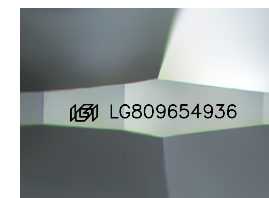
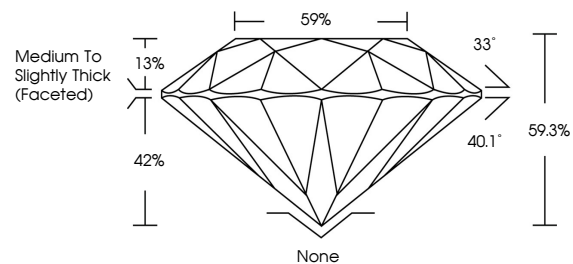
Symmetry **EXCELLENT**

Fluorescence **NONE**

Inscription(s) **LG809654936**

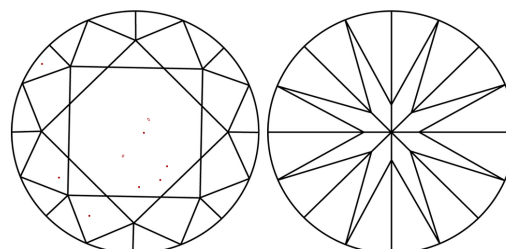
Comments: This Laboratory Grown Diamond was created by Chemical Vapor Deposition (CVD) growth process.
Type IIa

PROPORTIONS



Sample Image Used

CLARITY CHARACTERISTICS



KEY TO SYMBOLS

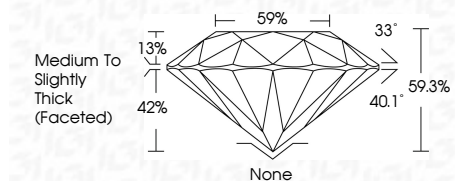
Red symbols indicate internal characteristics.
Green symbols indicate external characteristics.

COLOR

D E F G H I J Faint Very Light Light

CLARITY

FL	IF	VS ¹⁻²	VS ¹⁻²	SI ¹⁻²	I ¹⁻³
Flawless	Internally Flawless	Very Very Slightly Included	Very Slightly Included	Slightly Included	Included



ADDITIONAL GRADING INFORMATION

Polish **EXCELLENT**

Symmetry **EXCELLENT**

Fluorescence **NONE**

Inscription(s) **LG809654936**

Comments: This Laboratory Grown Diamond was created by Chemical Vapor Deposition (CVD) growth process.
Type IIa



IGI



June 12, 2026
IGI Report No. **LG809654936**
ROUND BRILLIANT

3.51 CARATS
F

9.80 - 9.83 X 5.82 MM

Carat Weight
Color Grade
Clarity Grade
Cut Grade
Depth
Table
Girdle

3.51 CARATS
F
VS 1
IDEAL
59.3%
59%
Medium To Slightly Thick (Faceted)

Culet
Polish
Symmetry
Fluorescence
Inscriptions(s)

None
EXCELLENT
EXCELLENT
NONE
NONE
igi LG809654936

Comments: This Laboratory Grown Diamond was created by Chemical Vapor Deposition (CVD) growth process.
Type IIa