



LABORATORY GROWN DIAMOND REPORT

June 13, 2026
IGI Report Number **LG809648602**
Description **LABORATORY GROWN DIAMOND**
Shape and Cutting Style **ROUND BRILLIANT**
Measurements **5.75 - 5.81 X 3.63 MM**

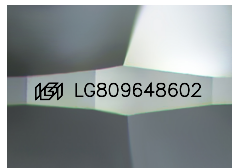
GRADING RESULTS

Carat Weight **0.75 CARAT**
Color Grade **FANCY INTENSE YELLOW**
Clarity Grade **VVS 2**
Cut Grade **EXCELLENT**

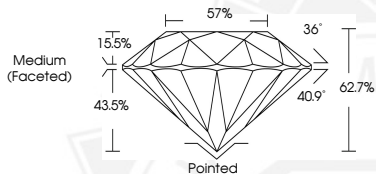
ADDITIONAL GRADING INFORMATION

Polish **EXCELLENT**
Symmetry **EXCELLENT**
Fluorescence **NONE**
Inscription(s) **IGI LG809648602**

Comments: As Grown - No indication of post-growth treatment.
This Laboratory Grown Diamond was created by High Pressure High Temperature (HPHT) growth process.



Sample Image Used



June 13, 2026
IGI Report Number **LG809648602**
ROUND BRILLIANT
LABORATORY GROWN DIAMOND
5.75 - 5.81 X 3.63 MM
Carat Weight **0.75 CARAT**
Color Grade **FANCY INTENSE YELLOW**
Clarity Grade **VVS 2**
Cut Grade **EXCELLENT**
Polish **EXCELLENT**
Symmetry **EXCELLENT**
Fluorescence **NONE**
Inscription(s) **IGI LG809648602**

Comments: As Grown - No indication of post-growth treatment. This Laboratory Grown Diamond was created by High Pressure High Temperature (HPHT) growth process.



June 13, 2026
IGI Report Number **LG809648602**
ROUND BRILLIANT
LABORATORY GROWN DIAMOND
5.75 - 5.81 X 3.63 MM
Carat Weight **0.75 CARAT**
Color Grade **FANCY INTENSE YELLOW**
Clarity Grade **VVS 2**
Cut Grade **EXCELLENT**
Polish **EXCELLENT**
Symmetry **EXCELLENT**
Fluorescence **NONE**
Inscription(s) **IGI LG809648602**

Comments: As Grown - No indication of post-growth treatment. This Laboratory Grown Diamond was created by High Pressure High Temperature (HPHT) growth process.



THIS DOCUMENT WAS PRODUCED WITH THE FOLLOWING SECURITY MEASURES: SPECIAL DOCUMENT PAPER, INK SCREENS, WATERMARK, BACKGROUND DESIGNS, HOLOGRAM AND OTHER SECURITY FEATURES NOT LISTED AND DO EXCEED DOCUMENT SECURITY INDUSTRY GUIDELINES.