



ELECTRONIC COPY

LG809648475
Report verification at igi.org

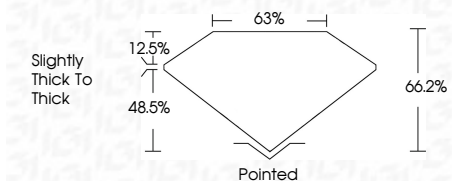


June 13, 2026
IGI Report Number LG809648475
Description LABORATORY GROWN DIAMOND
Shape and Cutting Style CUT CORNERED RECTANGULAR MODIFIED BRILLIANT

Measurements 7.27 X 4.91 X 3.25 MM

GRADING RESULTS

Carat Weight 1.04 CARAT
Color Grade FANCY VIVID PINK
Clarity Grade VVS 2



ADDITIONAL GRADING INFORMATION

Polish EXCELLENT
Symmetry EXCELLENT
Fluorescence SLIGHT
Inscription(s) IGI LG809648475

Comments: This Laboratory Grown Diamond was created by Chemical Vapor Deposition (CVD) growth process. Indications of post-growth treatment.



June 13, 2026
IGI Report No. LG809648475
CUT CORNERED RECT. MODIFIED BRILLIANT
1.04 CARAT
FANCY VIVID PINK
VVS 2
66.2%
63%
Slightly thick to thick
Pointed
EXCELLENT
EXCELLENT
SLIGHT
IGI LG809648475
Comments: This Laboratory Grown Diamond was created by Chemical Vapor Deposition (CVD) growth process. Indications of post-growth treatment.

LABORATORY GROWN DIAMOND REPORT

June 13, 2026
IGI Report Number LG809648475
Description LABORATORY GROWN DIAMOND
Shape and Cutting Style CUT CORNERED RECTANGULAR MODIFIED BRILLIANT
Measurements 7.27 X 4.91 X 3.25 MM

GRADING RESULTS

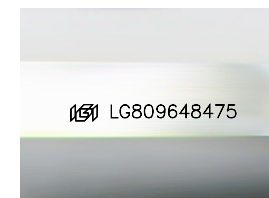
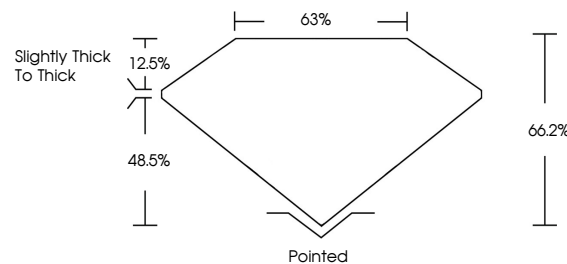
Carat Weight 1.04 CARAT
Color Grade FANCY VIVID PINK
Clarity Grade VVS 2

ADDITIONAL GRADING INFORMATION

Polish EXCELLENT
Symmetry EXCELLENT
Fluorescence SLIGHT
Inscription(s) IGI LG809648475

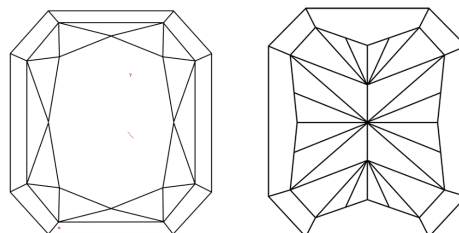
Comments: This Laboratory Grown Diamond was created by Chemical Vapor Deposition (CVD) growth process. Indications of post-growth treatment.

PROPORTIONS



Sample Image Used

CLARITY CHARACTERISTICS



KEY TO SYMBOLS

Red symbols indicate internal characteristics.
Green symbols indicate external characteristics.

COLOR

D E F G H I J Faint Very Light Light

CLARITY

FL IF VVS 1-2 VS 1-2 SI 1-2 I 1-3
Flawless Internally Flawless Very Very Slightly Included Very Slightly Included Slightly Included Included