



ELECTRONIC COPY

LG809648474
Report verification at igi.org



June 13, 2026
IGI Report Number **LG809648474**

Description **LABORATORY GROWN DIAMOND**

Shape and Cutting Style **CUT CORNERED
RECTANGULAR MODIFIED
BRILLIANT**

Measurements **8.63 X 6.11 X 4.09 MM**

GRADING RESULTS

Carat Weight **2.01 CARATS**

Color Grade **FANCY INTENSE PINK**

Clarity Grade **VVS 2**

LABORATORY GROWN DIAMOND REPORT

June 13, 2026

IGI Report Number **LG809648474**

Description **LABORATORY GROWN DIAMOND**

Shape and Cutting Style **CUT CORNERED RECTANGULAR
MODIFIED BRILLIANT**

Measurements **8.63 X 6.11 X 4.09 MM**

GRADING RESULTS

Carat Weight **2.01 CARATS**

Color Grade **FANCY INTENSE PINK**

Clarity Grade **VVS 2**

ADDITIONAL GRADING INFORMATION

Polish **EXCELLENT**

Symmetry **EXCELLENT**

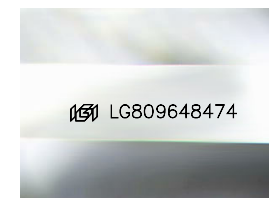
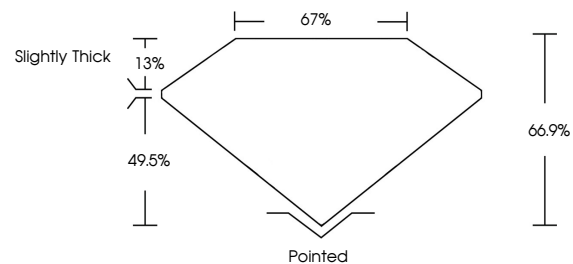
Fluorescence **SLIGHT**

Inscription(s) **IGI LG809648474**

Comments: This Laboratory Grown Diamond was created by Chemical Vapor Deposition (CVD) growth process.

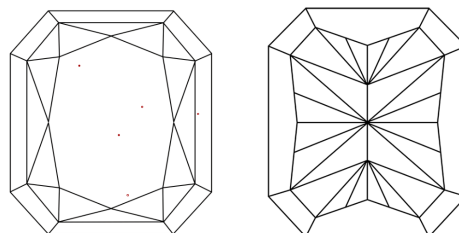
Indications of post-growth treatment.

PROPORTIONS



Sample Image Used

CLARITY CHARACTERISTICS



KEY TO SYMBOLS

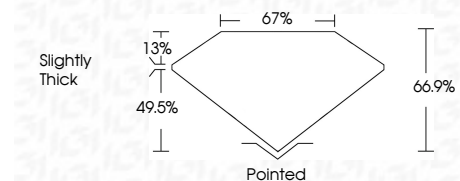
Red symbols indicate internal characteristics.
Green symbols indicate external characteristics.

COLOR

D E F G H I J Faint Very Light Light

CLARITY

FL	IF	VVS ¹⁻²	VS ¹⁻²	SI ¹⁻²	I ¹⁻³
Flawless	Internally Flawless	Very Very Slightly Included	Very Slightly Included	Slightly Included	Included



ADDITIONAL GRADING INFORMATION

Polish **EXCELLENT**

Symmetry **EXCELLENT**

Fluorescence **SLIGHT**

Inscription(s) **IGI LG809648474**

Comments: This Laboratory Grown Diamond was created by Chemical Vapor Deposition (CVD) growth process.

Indications of post-growth treatment.



June 13, 2026
IGI Report No. **LG809648474**
CUT CORNERED RECT. MODIFIED BRILLIANT
8.63 X 6.11 X 4.09 MM
Carat Weight **2.01 CARATS**
Color Grade **FANCY INTENSE PINK**
Clarity Grade **VVS 2**
Depth **66.9%**
Table **67%**
Girdle **Slightly Thick**
Culet **Pointed**
Polish **EXCELLENT**
Symmetry **EXCELLENT**
Fluorescence **SLIGHT**
Inscription(s) **IGI LG809648474**
Comments: This Laboratory Grown Diamond was created by Chemical Vapor Deposition (CVD) growth process. Indications of post-growth treatment.