



ELECTRONIC COPY

LG809648469
Report verification at igi.org



June 13, 2026

IGI Report Number **LG809648469**

Description **LABORATORY GROWN DIAMOND**

Shape and Cutting Style **HEART MODIFIED BRILLIANT**

Measurements **8.12 X 9.05 X 5.24 MM**

GRADING RESULTS

Carat Weight **2.93 CARATS**

Color Grade **FANCY VIVID GREEN**

Clarity Grade **VVS 2**

June 13, 2026
IGI Report Number **LG809648469**
Description **LABORATORY GROWN DIAMOND**
Shape and Cutting Style **HEART MODIFIED BRILLIANT**
Measurements **8.12 X 9.05 X 5.24 MM**

GRADING RESULTS

Carat Weight **2.93 CARATS**

Color Grade **FANCY VIVID GREEN**

Clarity Grade **VVS 2**

ADDITIONAL GRADING INFORMATION

Polish **EXCELLENT**

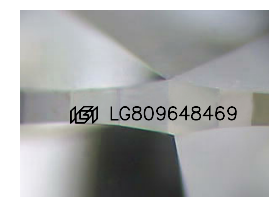
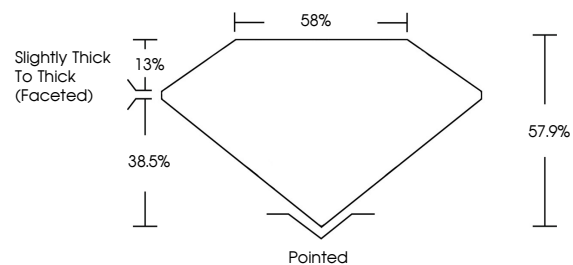
Symmetry **EXCELLENT**

Fluorescence **VERY SLIGHT**

Inscription(s) **IGI LG809648469**

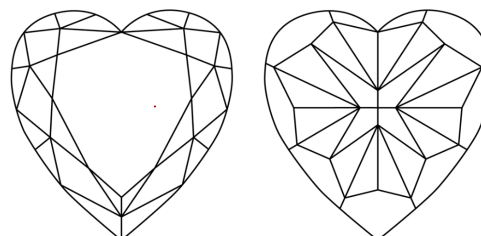
Comments: This Laboratory Grown Diamond was created by Chemical Vapor Deposition (CVD) growth process.
Indications of post-growth treatment.

PROPORTIONS



Sample Image Used

CLARITY CHARACTERISTICS



KEY TO SYMBOLS

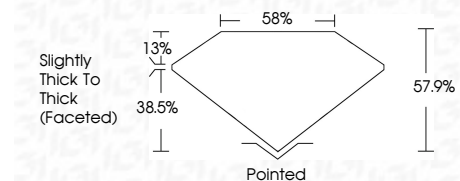
Red symbols indicate internal characteristics.
Green symbols indicate external characteristics.

COLOR

D E F G H I J Faint Very Light Light

CLARITY

FL	IF	VVS ¹⁻²	VS ¹⁻²	SI ¹⁻²	I ¹⁻³
Flawless	Internally Flawless	Very Very Slightly Included	Very Slightly Included	Slightly Included	Included



ADDITIONAL GRADING INFORMATION

Polish **EXCELLENT**

Symmetry **EXCELLENT**

Fluorescence **VERY SLIGHT**

Inscription(s) **IGI LG809648469**

Comments: This Laboratory Grown Diamond was created by Chemical Vapor Deposition (CVD) growth process.
Indications of post-growth treatment.



June 13, 2026
IGI Report No. **LG809648469**
HEART MODIFIED BRILLIANT
8.12 X 9.05 X 5.24 MM
2.93 CARATS
FANCY VIVID GREEN
VVS 2
57.9%
38.5%
Slightly Thick To Thick (Faceted)
Pointed
EXCELLENT
EXCELLENT
VERY SLIGHT
IGI LG809648469
Comments: This Laboratory Grown Diamond was created by Chemical Vapor Deposition (CVD) growth process.
Indications of post-growth treatment.