



ELECTRONIC COPY

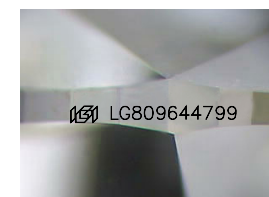
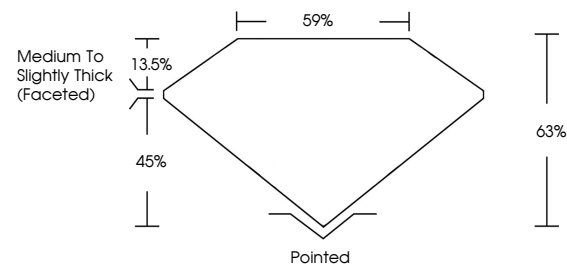
LG809644799
Report verification at igi.org



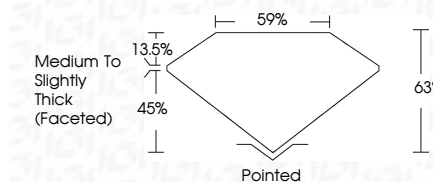
June 11, 2026
IGI Report Number **LG809644799**
Description **LABORATORY GROWN DIAMOND**
Shape and Cutting Style **MARQUISE BRILLIANT**
Measurements **11.97 X 5.95 X 3.75 MM**
GRADING RESULTS
Carat Weight **1.53 CARAT**
Color Grade **D**
Clarity Grade **VVS 2**

June 11, 2026
IGI Report Number **LG809644799**
Description **LABORATORY GROWN DIAMOND**
Shape and Cutting Style **MARQUISE BRILLIANT**
Measurements **11.97 X 5.95 X 3.75 MM**
GRADING RESULTS
Carat Weight **1.53 CARAT**
Color Grade **D**
Clarity Grade **VVS 2**

PROPORTIONS



Sample Image Used



ADDITIONAL GRADING INFORMATION

Polish **EXCELLENT**
Symmetry **EXCELLENT**
Fluorescence **NONE**
Inscription(s) **IGI LG809644799**

Comments: This Laboratory Grown Diamond was created by Chemical Vapor Deposition (CVD) growth process.
Type IIa

ADDITIONAL GRADING INFORMATION

Polish **EXCELLENT**
Symmetry **EXCELLENT**
Fluorescence **NONE**
Inscription(s) **IGI LG809644799**
Comments: This Laboratory Grown Diamond was created by Chemical Vapor Deposition (CVD) growth process.
Type IIa

COLOR

D E F G H I J Faint Very Light Light

CLARITY

FL	IF	VS ¹⁻²	VS ¹⁻²	SI ¹⁻²	I ¹⁻³
Flawless	Internally Flawless	Very Very Slightly Included	Very Slightly Included	Slightly Included	Included



IGI



June 11, 2026
IGI Report No LG809644799
MARQUISE BRILLIANT
11.97 X 5.95 X 3.75 MM
1.53 CARAT
Color Grade D
Clarity Grade VVS 2
Table 68%
Depth 59%
Girdle Medium to Slightly Thick (Faceted)
Culet Pointed
Polish EXCELLENT
Symmetry EXCELLENT
Fluorescence NONE
Inscription(s) IGI LG809644799
Comments: This Laboratory Grown Diamond was created by Chemical Vapor Deposition (CVD) growth process.
Type IIa