



ELECTRONIC COPY

LG809644151
Report verification at igi.org



June 20, 2026

IGI Report Number **LG809644151**

Description **LABORATORY GROWN DIAMOND**

Shape and Cutting Style **PEAR MODIFIED BRILLIANT**

Measurements **11.80 X 7.46 X 4.81 MM**

GRADING RESULTS

Carat Weight **3.06 CARATS**

Color Grade **FANCY VIVID PINK**

Clarity Grade **VS 1**

June 20, 2026

IGI Report Number **LG809644151**

Description **LABORATORY GROWN DIAMOND**

Shape and Cutting Style **PEAR MODIFIED BRILLIANT**

Measurements **11.80 X 7.46 X 4.81 MM**

GRADING RESULTS

Carat Weight **3.06 CARATS**

Color Grade **FANCY VIVID PINK**

Clarity Grade **VS 1**

ADDITIONAL GRADING INFORMATION

Polish **EXCELLENT**

Symmetry **EXCELLENT**

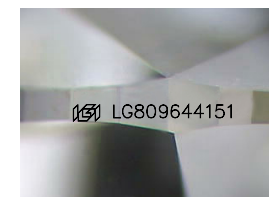
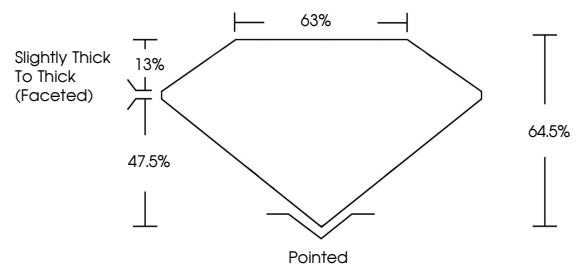
Fluorescence **STRONG**

Inscription(s) **IGI LG809644151**

Comments: This Laboratory Grown Diamond was created by Chemical Vapor Deposition (CVD) growth process.

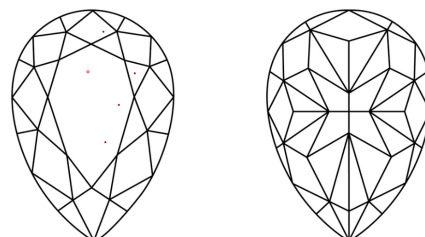
Indications of post-growth treatment.

PROPORTIONS



Sample Image Used

CLARITY CHARACTERISTICS



KEY TO SYMBOLS

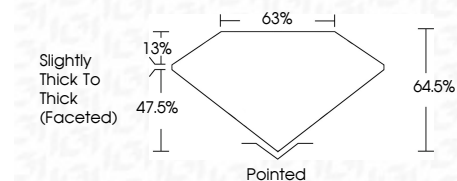
Red symbols indicate internal characteristics.
Green symbols indicate external characteristics.

COLOR

D E F G H I J Faint Very Light Light

CLARITY

FL	IF	VS ¹⁻²	VS ¹⁻²	SI ¹⁻²	I ¹⁻³
Flawless	Internally Flawless	Very Very Slightly Included	Very Slightly Included	Slightly Included	Included



ADDITIONAL GRADING INFORMATION

Polish **EXCELLENT**

Symmetry **EXCELLENT**

Fluorescence **STRONG**

Inscription(s) **IGI LG809644151**

Comments: This Laboratory Grown Diamond was created by Chemical Vapor Deposition (CVD) growth process. Indications of post-growth treatment.



IGI



June 20, 2026
IGI Report No LG809644151
PEAR MODIFIED BRILLIANT

3.06 CARATS
Carat Weight
FANCY VIVID PINK
Color Grade

VS 1
Clarity Grade
64.5%
63%
Slightly Thick To Thick (Faceted)
Depth
Table
Girdle

Pointed
Culet
EXCELLENT
EXCELLENT
STRONG
Fluorescence
Inscription(s)
IGI LG809644151

Comments: This Laboratory Grown Diamond was created by Chemical Vapor Deposition (CVD) growth process. Indications of post-growth treatment.