



ELECTRONIC COPY

LG809644041 Report verification at igi.org



June 11, 2026 IGI Report Number LG809644041 Description LABORATORY GROWN DIAMOND Shape and Cutting Style ROUND BRILLIANT Measurements 11.49 - 11.57 X 6.88 MM GRADING RESULTS Carat Weight 5.60 CARATS Color Grade E Clarity Grade VVS 2 Cut Grade IDEAL

June 11, 2026 IGI Report Number LG809644041 Description LABORATORY GROWN DIAMOND Shape and Cutting Style ROUND BRILLIANT Measurements 11.49 - 11.57 X 6.88 MM

GRADING RESULTS

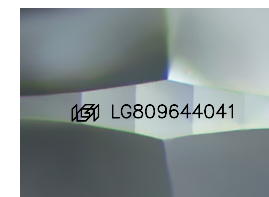
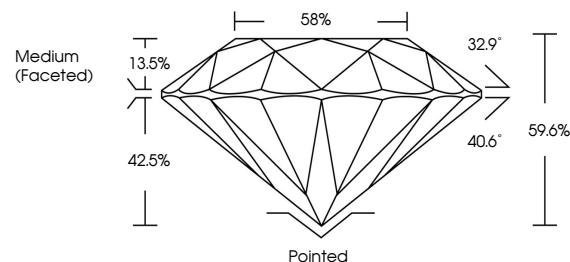
Carat Weight 5.60 CARATS Color Grade E Clarity Grade VVS 2 Cut Grade IDEAL

ADDITIONAL GRADING INFORMATION

Polish EXCELLENT Symmetry EXCELLENT Fluorescence NONE Inscription(s) IGI LG809644041

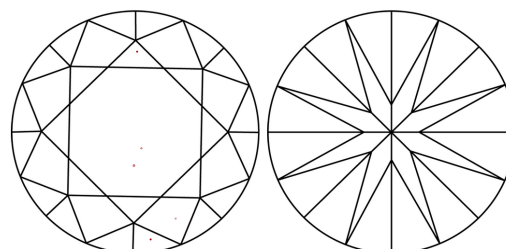
Comments: This Laboratory Grown Diamond was created by Chemical Vapor Deposition (CVD) growth process. Type IIa

PROPORTIONS



Sample Image Used

CLARITY CHARACTERISTICS



KEY TO SYMBOLS

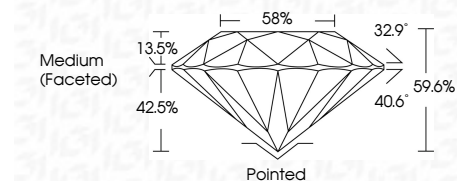
Red symbols indicate internal characteristics. Green symbols indicate external characteristics.

COLOR

D E F G H I J Faint Very Light Light

CLARITY

FL IF VVS 1-2 VS 1-2 SI 1-2 I 1-3 Flawless Internally Flawless Very Very Slightly Included Very Slightly Included Slightly Included Included



ADDITIONAL GRADING INFORMATION

Polish EXCELLENT Symmetry EXCELLENT Fluorescence NONE Inscription(s) IGI LG809644041 Comments: This Laboratory Grown Diamond was created by Chemical Vapor Deposition (CVD) growth process. Type IIa



June 11, 2026 IGI Report No LG809644041 ROUND BRILLIANT 5.60 CARATS E 11.49 - 11.57 X 6.88 MM Color Grade VVS 2 IDEAL 59.6% 58% Medium (Faceted) Pointed EXCELLENT EXCELLENT NONE NONE IGI LG809644041 Comments: This Laboratory Grown Diamond was created by Chemical Vapor Deposition (CVD) growth process. Type IIa