



ELECTRONIC COPY

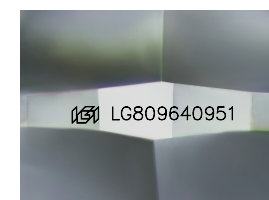
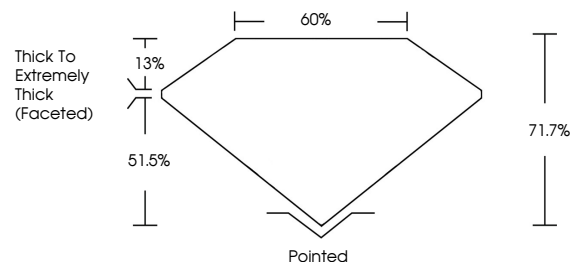
LG809640951
Report verification at igi.org



June 12, 2026
IGI Report Number **LG809640951**
Description **LABORATORY GROWN DIAMOND**
Shape and Cutting Style **CUSHION MODIFIED BRILLIANT**
Measurements **7.92 X 6.29 X 4.51 MM**
GRADING RESULTS
Carat Weight **2.05 CARATS**
Color Grade **FANCY BLUE**
Clarity Grade **VS 1**

June 12, 2026
IGI Report Number **LG809640951**
Description **LABORATORY GROWN DIAMOND**
Shape and Cutting Style **CUSHION MODIFIED BRILLIANT**
Measurements **7.92 X 6.29 X 4.51 MM**

PROPORTIONS

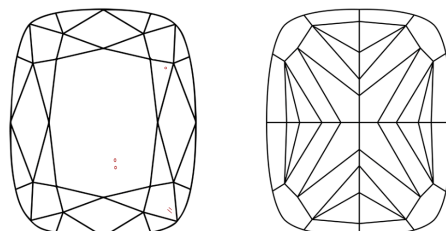


Sample Image Used

GRADING RESULTS

Carat Weight **2.05 CARATS**
Color Grade **FANCY BLUE**
Clarity Grade **VS 1**

CLARITY CHARACTERISTICS



KEY TO SYMBOLS

Red symbols indicate internal characteristics.
Green symbols indicate external characteristics.

ADDITIONAL GRADING INFORMATION

Polish **EXCELLENT**
Symmetry **EXCELLENT**
Fluorescence **NONE**
Inscription(s) **IGI LG809640951**

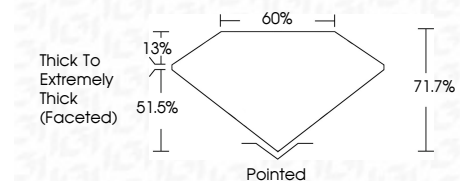
Comments: As Grown - No indication of post-growth treatment.
This Laboratory Grown Diamond was created by High Pressure High Temperature (HPHT) growth process.

COLOR

D E F G H I J Faint Very Light Light

CLARITY

FL	IF	VS ¹⁻²	VS ¹⁻²	SI ¹⁻²	I ¹⁻³
Flawless	Internally Flawless	Very Very Slightly Included	Very Slightly Included	Slightly Included	Included



ADDITIONAL GRADING INFORMATION

Polish **EXCELLENT**
Symmetry **EXCELLENT**
Fluorescence **NONE**
Inscription(s) **IGI LG809640951**
Comments: As Grown - No indication of post-growth treatment.
This Laboratory Grown Diamond was created by High Pressure High Temperature (HPHT) growth process.



IGI



June 12, 2026
IGI Report No. LG809640951
CUSHION MODIFIED BRILLIANT
7.92 X 6.29 X 4.51 MM
2.05 CARATS
FANCY BLUE
VS 1
71.7%
60%
Thick To Extremely Thick (Faceted)
Pointed
EXCELLENT
EXCELLENT
NONE
IGI LG809640951

Comments: As Grown - No indication of post-growth treatment.
This Laboratory Grown Diamond was created by High Pressure High Temperature (HPHT) growth process.