



**ELECTRONIC COPY**

LG809637491  
Report verification at igi.org



June 15, 2026

IGI Report Number **LG809637491**

Description **LABORATORY GROWN DIAMOND**

Shape and Cutting Style **CUT CORNERED  
RECTANGULAR MODIFIED  
BRILLIANT**

Measurements **10.29 X 6.89 X 4.31 MM**

**GRADING RESULTS**

Carat Weight **3.02 CARATS**

Color Grade **FANCY INTENSE PINK**

Clarity Grade **VS 1**

**LABORATORY GROWN DIAMOND REPORT**

June 15, 2026

IGI Report Number **LG809637491**

Description **LABORATORY GROWN DIAMOND**

Shape and Cutting Style **CUT CORNERED RECTANGULAR  
MODIFIED BRILLIANT**

Measurements **10.29 X 6.89 X 4.31 MM**

**GRADING RESULTS**

Carat Weight **3.02 CARATS**

Color Grade **FANCY INTENSE PINK**

Clarity Grade **VS 1**

**ADDITIONAL GRADING INFORMATION**

Polish **EXCELLENT**

Symmetry **EXCELLENT**

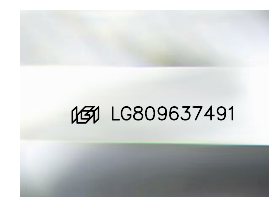
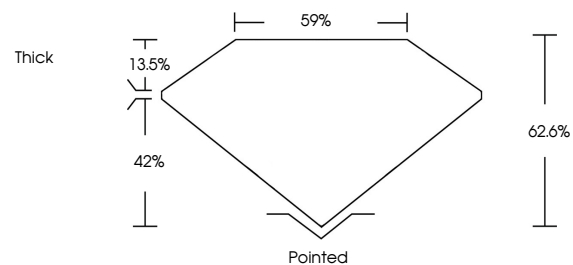
Fluorescence **SLIGHT**

Inscription(s) **IGI LG809637491**

Comments: This Laboratory Grown Diamond was created by Chemical Vapor Deposition (CVD) growth process.

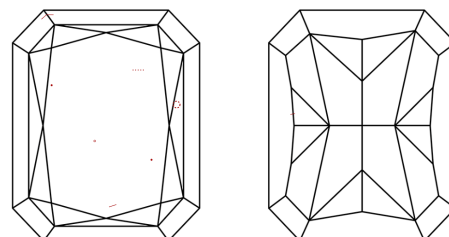
Indications of post-growth treatment.

**PROPORTIONS**



Sample Image Used

**CLARITY CHARACTERISTICS**



**KEY TO SYMBOLS**

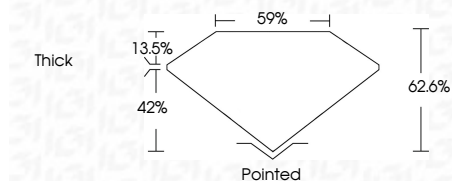
Red symbols indicate internal characteristics.  
Green symbols indicate external characteristics.

**COLOR**

D E F G H I J Faint Very Light Light

**CLARITY**

FL	IF	VS <sup>1-2</sup>	VS <sup>1-2</sup>	SI <sup>1-2</sup>	I <sup>1-3</sup>
Flawless	Internally Flawless	Very Very Slightly Included	Very Slightly Included	Slightly Included	Included



**ADDITIONAL GRADING INFORMATION**

Polish **EXCELLENT**

Symmetry **EXCELLENT**

Fluorescence **SLIGHT**

Inscription(s) **IGI LG809637491**

Comments: This Laboratory Grown Diamond was created by Chemical Vapor Deposition (CVD) growth process. Indications of post-growth treatment.



June 15, 2026  
IGI Report No. LG809637491  
CUT CORNERED RECT. MODIFIED BRILLIANT

10.29 X 6.89 X 4.31 MM

3.02 CARATS  
FANCY INTENSE PINK

VS 1  
62.6%  
59%  
Thick

Pointed  
EXCELLENT  
EXCELLENT  
SLIGHT  
IGI LG809637491

Comments: This Laboratory Grown Diamond was created by Chemical Vapor Deposition (CVD) growth process. Indications of post-growth treatment.