



ELECTRONIC COPY

LG809637084 Report verification at igi.org



June 12, 2026 IGI Report Number LG809637084 Description LABORATORY GROWN DIAMOND Shape and Cutting Style ROUND BRILLIANT Measurements 8.40 - 8.42 X 5.14 MM GRADING RESULTS Carat Weight 2.22 CARATS Color Grade D Clarity Grade INTERNALLY FLAWLESS Cut Grade IDEAL

June 12, 2026 IGI Report Number LG809637084 Description LABORATORY GROWN DIAMOND Shape and Cutting Style ROUND BRILLIANT Measurements 8.40 - 8.42 X 5.14 MM

GRADING RESULTS

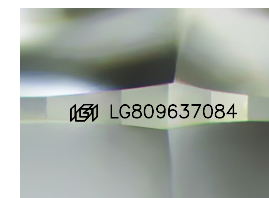
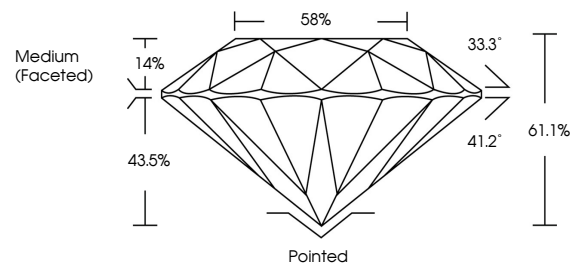
Carat Weight 2.22 CARATS Color Grade D Clarity Grade INTERNALLY FLAWLESS Cut Grade IDEAL

ADDITIONAL GRADING INFORMATION

Polish EXCELLENT Symmetry EXCELLENT Fluorescence NONE Inscription(s) LG809637084

Comments: HEARTS & ARROWS As Grown - No indication of post-growth treatment. This Laboratory Grown Diamond was created by High Pressure High Temperature (HPHT) growth process. Type II

PROPORTIONS



Sample Image Used

CLARITY CHARACTERISTICS



KEY TO SYMBOLS

Red symbols indicate internal characteristics. Green symbols indicate external characteristics.

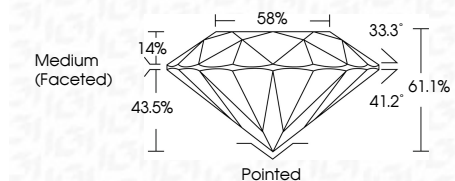


COLOR

D E F G H I J Faint Very Light Light

CLARITY

FL IF VS 1-2 VS 1-2 SI 1-2 I 1-3 Flawless Internally Flawless Very Very Slightly Included Very Slightly Included Slightly Included Included



ADDITIONAL GRADING INFORMATION

Polish EXCELLENT Symmetry EXCELLENT Fluorescence NONE Inscription(s) LG809637084 Comments: HEARTS & ARROWS As Grown - No indication of post-growth treatment. This Laboratory Grown Diamond was created by High Pressure High Temperature (HPHT) growth process. Type II



Summary of report details including date, report number, description, measurements, grading results, and additional information.