



ELECTRONIC COPY

LG809635369
Report verification at igi.org



June 13, 2026
IGI Report Number **LG809635369**
Description **LABORATORY GROWN DIAMOND**
Shape and Cutting Style **PRINCESS CUT**
Measurements **7.18 X 7.08 X 4.65 MM**
GRADING RESULTS
Carat Weight **2.01 CARATS**
Color Grade **FANCY INTENSE PINK**
Clarity Grade **VS 2**

LABORATORY GROWN DIAMOND REPORT

June 13, 2026
IGI Report Number **LG809635369**
Description **LABORATORY GROWN DIAMOND**
Shape and Cutting Style **PRINCESS CUT**
Measurements **7.18 X 7.08 X 4.65 MM**

GRADING RESULTS

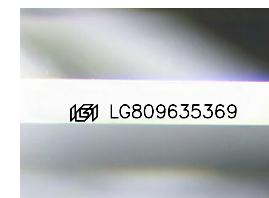
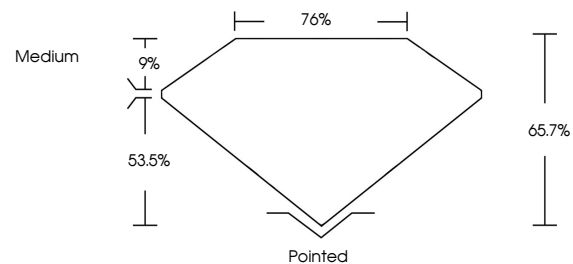
Carat Weight **2.01 CARATS**
Color Grade **FANCY INTENSE PINK**
Clarity Grade **VS 2**

ADDITIONAL GRADING INFORMATION

Polish **VERY GOOD**
Symmetry **VERY GOOD**
Fluorescence **SLIGHT**
Inscription(s) **LG809635369**

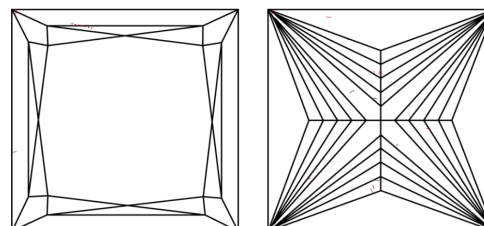
Comments: This Laboratory Grown Diamond was created by Chemical Vapor Deposition (CVD) growth process.
Indications of post-growth treatment.

PROPORTIONS



Sample Image Used

CLARITY CHARACTERISTICS



KEY TO SYMBOLS

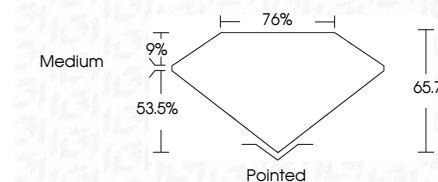
Red symbols indicate internal characteristics.
Green symbols indicate external characteristics.

COLOR

D E F G H I J Faint Very Light Light

CLARITY

FL	IF	VS ¹⁻²	VS ¹⁻²	SI ¹⁻²	I ¹⁻³
Flawless	Internally Flawless	Very Very Slightly Included	Very Slightly Included	Slightly Included	Included



ADDITIONAL GRADING INFORMATION

Polish **VERY GOOD**
Symmetry **VERY GOOD**
Fluorescence **SLIGHT**
Inscription(s) **LG809635369**
Comments: This Laboratory Grown Diamond was created by Chemical Vapor Deposition (CVD) growth process.
Indications of post-growth treatment.



June 13, 2026
IGI Report No. **LG809635369**
PRINCESS CUT
2.01 CARATS
Carat Weight **FANCY INTENSE PINK**
Color Grade **VS 2**
Depth **65.7%**
Table **76%**
Girdle **Medium**
Culet **Pointed**
Polish **VERY GOOD**
Symmetry **VERY GOOD**
Fluorescence **SLIGHT**
Inscription(s) **LG809635369**
Comments: This Laboratory Grown Diamond was created by Chemical Vapor Deposition (CVD) growth process.
Indications of post-growth treatment.