



ELECTRONIC COPY

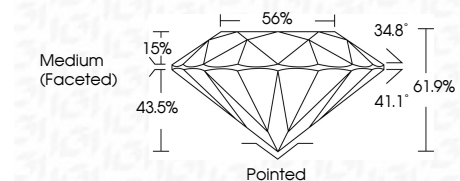
LG809634801 Report verification at igi.org



June 11, 2026 IGI Report Number LG809634801 Description LABORATORY GROWN DIAMOND Shape and Cutting Style ROUND BRILLIANT Measurements 9.26 - 9.31 X 5.75 MM

GRADING RESULTS

Carat Weight 3.02 CARATS Color Grade E Clarity Grade VS 1 Cut Grade IDEAL



ADDITIONAL GRADING INFORMATION

Polish EXCELLENT Symmetry EXCELLENT Fluorescence NONE Inscription(s) IGI LG809634801 Comments: This Laboratory Grown Diamond was created by Chemical Vapor Deposition (CVD) growth process. Type IIa

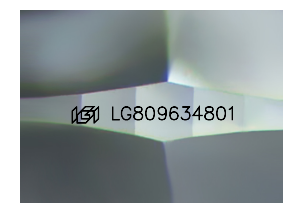
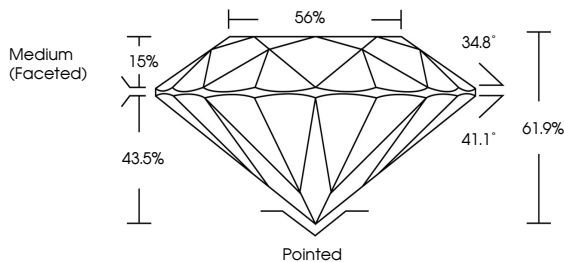


June 11, 2026 IGI Report No. LG809634801 ROUND BRILLIANT 3.02 CARATS E VS 1 IDEAL 61.9% 56% Medium (Faceted) Pointed EXCELLENT EXCELLENT NONE NONE IGI LG809634801 Comments: This Laboratory Grown Diamond was created by Chemical Vapor Deposition (CVD) growth process. Type IIa

June 11, 2026 IGI Report Number LG809634801 Description LABORATORY GROWN DIAMOND Shape and Cutting Style ROUND BRILLIANT Measurements 9.26 - 9.31 X 5.75 MM GRADING RESULTS Carat Weight 3.02 CARATS Color Grade E Clarity Grade VS 1 Cut Grade IDEAL ADDITIONAL GRADING INFORMATION Polish EXCELLENT Symmetry EXCELLENT Fluorescence NONE Inscription(s) IGI LG809634801

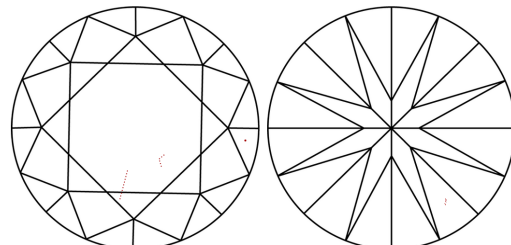
Comments: This Laboratory Grown Diamond was created by Chemical Vapor Deposition (CVD) growth process. Type IIa

PROPORTIONS



Sample Image Used

CLARITY CHARACTERISTICS



KEY TO SYMBOLS Red symbols indicate internal characteristics. Green symbols indicate external characteristics.

COLOR

Table with color scale: D, E, F, G, H, I, J, Faint, Very Light, Light

CLARITY

Table with clarity scale: FL, IF, VS 1-2, VS 1-2, SI 1-2, I 1-3, Flawless, Internally Flawless, Very Very Slightly Included, Very Slightly Included, Slightly Included, Included

