



ELECTRONIC COPY

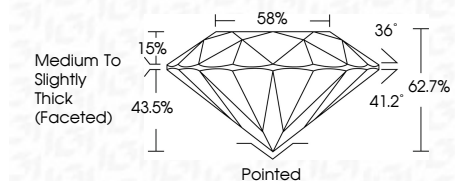
LG809634573 Report verification at igi.org



June 11, 2026 IGI Report Number LG809634573 Description LABORATORY GROWN DIAMOND Shape and Cutting Style ROUND BRILLIANT Measurements 7.29 - 7.32 X 4.58 MM

GRADING RESULTS

Carat Weight 1.52 CARAT Color Grade E Clarity Grade VVS 2 Cut Grade EXCELLENT



ADDITIONAL GRADING INFORMATION

Polish EXCELLENT Symmetry EXCELLENT Fluorescence NONE Inscription(s) LG809634573 Comments: This Laboratory Grown Diamond was created by Chemical Vapor Deposition (CVD) growth process. Type IIa



June 11, 2026 IGI Report No LG809634573 ROUND BRILLIANT 7.29 - 7.32 X 4.58 MM 1.52 CARAT E VVS 2 EXCELLENT 62.7% 58% Medium To Slightly Thick (Faceted) Pointed EXCELLENT EXCELLENT NONE NONE LG809634573

Comments: This Laboratory Grown Diamond was created by Chemical Vapor Deposition (CVD) growth process. Type IIa

LABORATORY GROWN DIAMOND REPORT

June 11, 2026 IGI Report Number LG809634573 Description LABORATORY GROWN DIAMOND Shape and Cutting Style ROUND BRILLIANT Measurements 7.29 - 7.32 X 4.58 MM

GRADING RESULTS

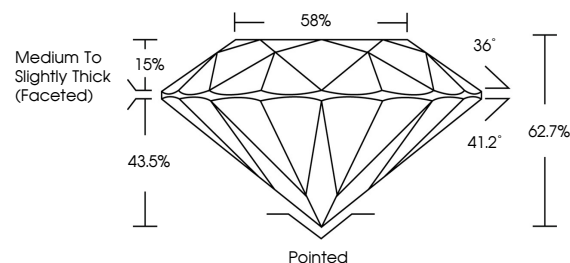
Carat Weight 1.52 CARAT Color Grade E Clarity Grade VVS 2 Cut Grade EXCELLENT

ADDITIONAL GRADING INFORMATION

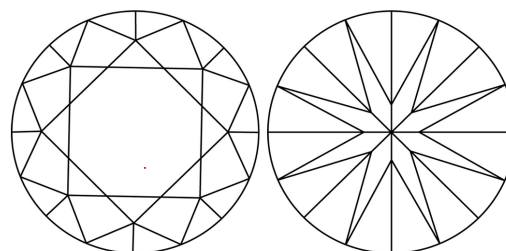
Polish EXCELLENT Symmetry EXCELLENT Fluorescence NONE Inscription(s) LG809634573

Comments: This Laboratory Grown Diamond was created by Chemical Vapor Deposition (CVD) growth process. Type IIa

PROPORTIONS

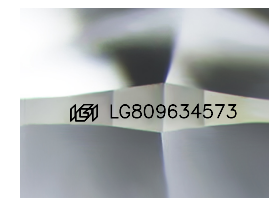


CLARITY CHARACTERISTICS



KEY TO SYMBOLS

Red symbols indicate internal characteristics. Green symbols indicate external characteristics.



Sample Image Used

COLOR

D E F G H I J Faint Very Light Light

CLARITY

FL IF VVS 1-2 VS 1-2 SI 1-2 I 1-3 Flawless Internally Flawless Very Very Slightly Included Very Slightly Included Slightly Included Included

